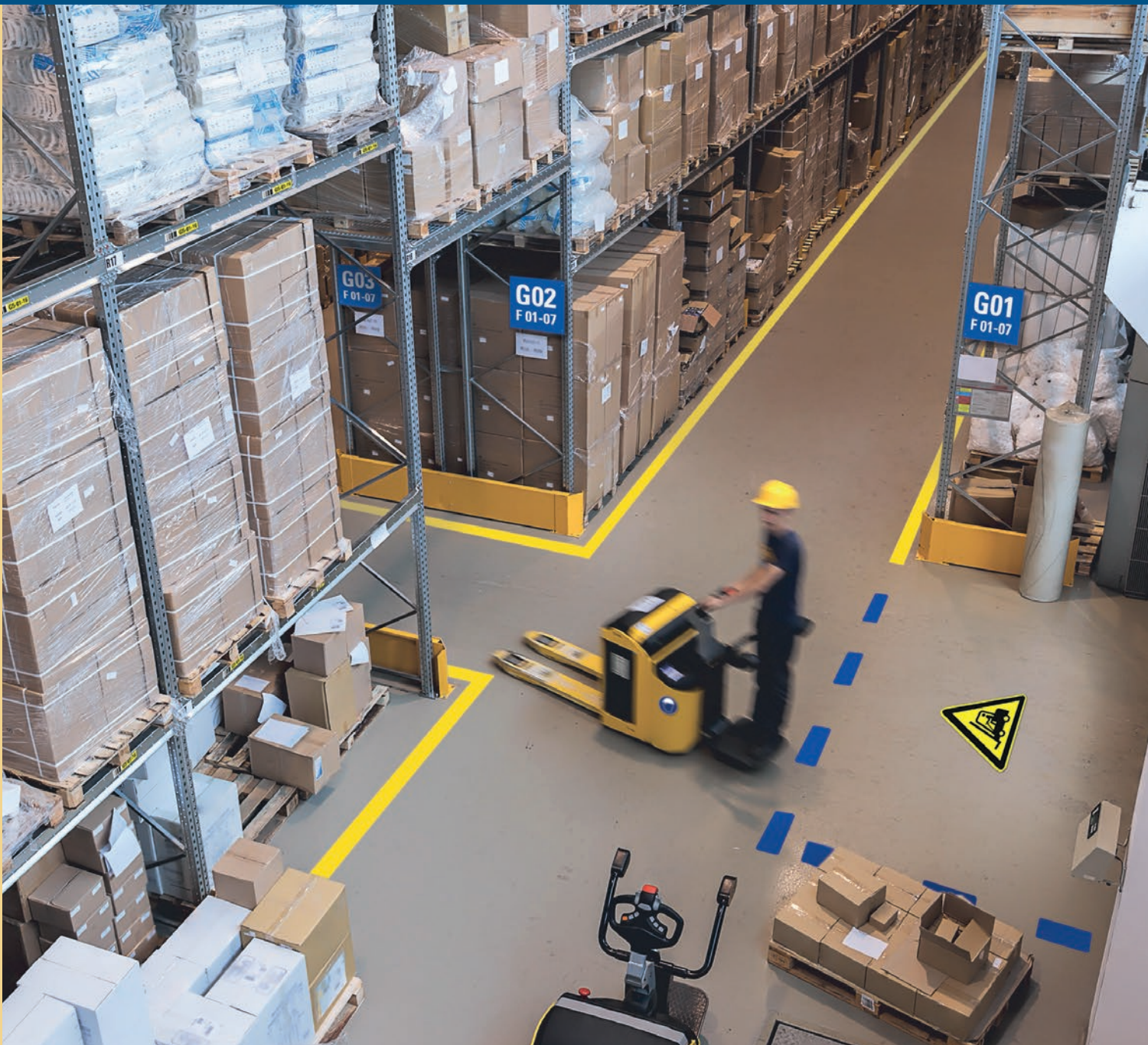


2018 edition

# 1A TAPES

## FLOOR MARKING AND LABELS





## Welcome to 1A Tapes

Dear business partners,

For more than 16 years, 1A Tapes has been manufacturing one of the most extensive assortments of industrial tapes at its Bad Köstritz site in Thuringia, Labels and markings. We are one of the leading suppliers in our core range of floor marking products and supply a widespread network of specialist dealers in Germany and the EU.

On a production area of approx. 3000 m<sup>2</sup> the most diverse customer solutions are implemented on modern machines. Individual customer advice, high quality and fast delivery service are part of our day-to-day business and form the basis of our success.

We are also happy to receive your suggestions or requirements and look forward to working together in a cooperative and trustful relationship.

Andreas Weiske (owner)

## Certification

Our quality Management, certified according to DIN EN ISO 9001:2015, guarantees you the consistently high quality of our products and services as well as process reliability.

The certification does not only meet the high quality requirements of our customers. It is also the affirmation of our commitment to the efficient, targeted performance of our services and the desire for continuous development and improvement.



DQS certified according to  
ISO 9001 : 2015  
Reg.no. 310651 QM15

## Your benefits

- Competent expert advice
- Quality assurance
- In-house production
- Certified according to ISO 9001:2015
- Fast delivery times
- Individual special production

## Contents

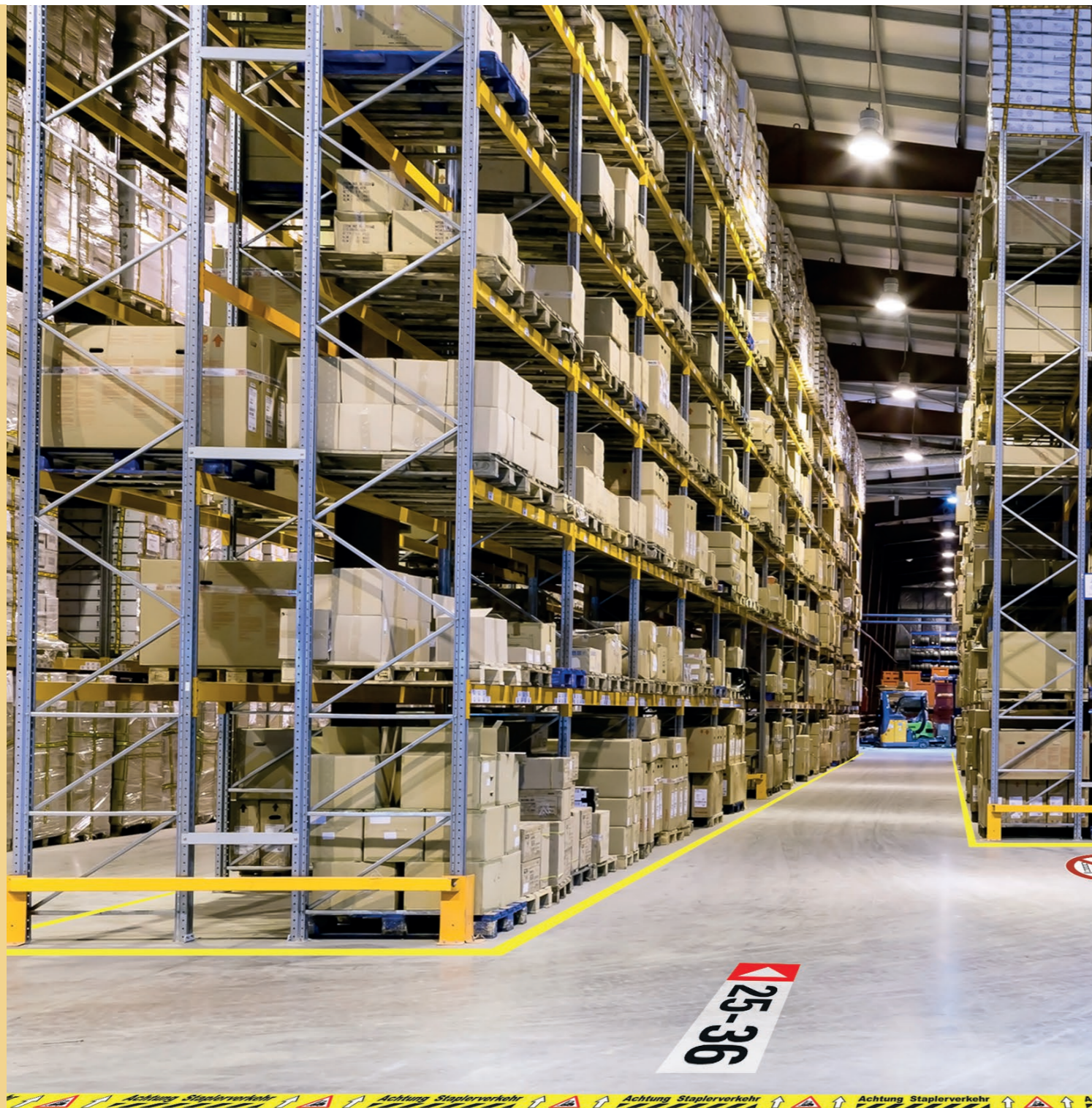
<b>Floor marking tapes</b>	
Floor marking tapes .....	4
<b>Optical tracking for driverless transport systems</b>	
Tracking for driverless transport systems .....	14
<b>Photoluminescent marking</b>	
Photoluminescent marking .....	16
<b>Reflective marking</b>	
Truck and trailer contour marking .....	18
Vehicle warning markings .....	19
Container warning markings .....	19
Reflective warning marking tape .....	19
<b>Cloth tape</b>	
Cloth tapes .....	20
Cloth patches .....	21
Label dispenser .....	21
<b>Anti-slip tapes</b>	
Stair profiles .....	22
Anti-slip tapes .....	23
Anti-slip can be custom printed .....	24
Anti-slip foils .....	25
<b>Labels for storage and shelves</b>	
Labels .....	26
<b>Operational labelling</b>	
Block storage signs, shelf row signs, aisle signs .....	29
Self-adhesive info pockets .....	30
Labelling pockets .....	31
Floor marking signs .....	31
Spray stencils .....	32
Pictograms .....	33
Storage location marker .....	34
<b>Rescue and fire safety signs</b>	
Escape signs .....	36
Fire safety signs .....	38
Angle and flag signs .....	39
<b>Accessories and attachment</b>	
Accessories .....	40
<b>Safety labels</b>	
Prohibitory signs .....	42
Mandatory signs .....	44
Warning signs .....	46

# Floor marking tapes

quick and easy to apply ■ immediately accessible ■ durable

Simple and safe marking of road surfaces, working areas or safety areas.  
Self-adhesive floor marking tapes as an alternative to marking with paint.

Do you have any questions regarding the appropriate floor marking tape?  
Give us a call! ☎ +49 36605 99130



## Overview Which floor marking tape for which application

The following overview shows you which marking tape is most suitable for your floor and application area.

Floor	Area	Degree of loading	Recommendation	Alternatives
Smooth concrete screed	Inside	1 Pedestrians	WT-5229/S.9	WT-5125/S.9 WT-5160/S.10
		2 Pallet trucks	WT-500/S.6	WT-5229/S.9 WT-5125/S.9 WT-6000/S.6 WT-5845/S.7
3 Fork-lift		WT-6000/S.6	WT-500/S.6 WT-5229/S.9	
	Outside		WT-5845*/S.7	WT-5645*/S.8
EP/ PU/ MMA coating	Inside	1 Pedestrians	WT-5229/S.9	WT-5125/S.9 WT-5160/S.10
		2 Pallet trucks	WT-5229/S.9	WT-500/S.6 WT-5125/S.9 WT-6000/S.6 WT-5845/S.7
		3 Fork-lift	WT-6000/S.6	WT-500/S.6 WT-5229/S.9
EP/ PU/ MMA coating anti-slip	Inside	1 Pedestrians	WT-5645*/S.8	
		2 Pallet trucks	WT-5645*/S.8	
Tiles	Inside	1 Pedestrians	WT-5125/S.9	WT-5160/S.10 WT-5164/S.10
		2 Pallet trucks	WT-500/S.6	WT-5845/S.7 WT-5846/S.7 WT-5229/S.9
Concrete paving	Inside	1 Pedestrians	WT-5845*/S.8	WT-5846/S.7 WT-5645*/S.8
		2 Pallet trucks	WT-5845*/S.8	WT-5846/S.7 WT-5645*/S.8
	Outside		WT-5845*/S.7	WT-5645*/S.8
Asphalt	Inside	1 Pedestrians	WT-5845*/S.8	WT-5846/S.7 WT-5645*/S.8
		2 Pallet trucks	WT-5845*/S.8	WT-5846/S.7 WT-5645*/S.8
	Outside		WT-5845*/S.7	WT-5645*/S.8

\*Primer No. 5 is required for this application

## WT-6000 Drive-over floor marking tape

- Metal marking tape
- Extremely wear-resistant

Suitable for marking roadways, work and safety areas or storage areas. Quick and easy to apply and extremely wear-resistant! Replaces marking with paint.

Application area: Inside  
Material: Metal  
Thickness: 0.7 mm  
Widths: 75 mm, 100 mm  
Sample: (01)



Colour	75 mm x 1,5 m	75 mm x 6 m	100 mm x 1,5 m	100 mm x 6 m	VE
yellow	5611.04.075	5611.04.075-6	5611.04.100	5611.04.100-6	1
red	5611.01.075	5611.01.075-6			1
blue	5611.10.075	5611.10.075-6			1
green	5611.02.075	5611.02.075-6			1
grey	5611.06.075	5611.06.075-6			1
white	5611.08.075	5611.08.075-6	5611.08.100	5611.08.100-6	1
black	5611.07.075	5611.07.075-6			1

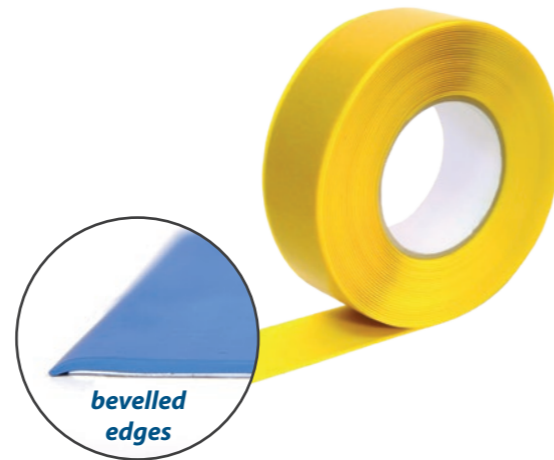


## WT-500 Durable floor marking tape

- Marking tape with bevelled edges
- Extremely wear-resistant

Distinctive are the bevelled edges, which in general prevent rapid damage from transport with lifting trucks, forklifts or cleaning machines. Replaces the marking with paint and is therefore immediately accessible.

Application area: Inside  
Material: PVC  
Thickness: 1.1 mm  
Widths: 50 mm, 75 mm, 100 mm  
Sample: (02)



Colour	50 mm x 25 m	50 mm x 10 m	75 mm x 25 m	75 mm x 10 m	100 mm x 25 m	100 mm x 10 m	VE
yellow	6125.04.050	6125.04.050-10	6125.04.075	6125.04.075-10	6125.04.100	6125.04.100-10	1
red	6125.01.050	6125.01.050-10	6125.01.075	6125.01.075-10			1
blue	6125.10.050	6125.10.050-10	6125.10.075	6125.10.075-10	6125.10.100	6125.10.100-10	1
green	6125.02.050	6125.02.050-10	6125.02.075	6125.02.075-10			1
white	6125.08.050	6125.08.050-10	6125.08.075	6125.08.075-10	6125.08.100	6125.08.100-10	1
black	6125.07.050	6125.07.050-10	6125.07.075	6125.07.075-10			1
yellow/black	6125.17.050-25L	6125.17.050-10L	6125.17.075-25L	6125.17.075-10L	6125.17.100-25L	6125.17.100-10L	1
red/white	6125.18.050-25L	6125.18.050-10L	6125.18.075-25L	6125.18.075-10L	6125.18.100-25L	6125.18.100-10L	1
blue/white	6125.21.050-25L	6125.21.050-10L	6125.21.075-25L	6125.21.075-10L	6125.21.100-25L	6125.21.100-10L	1
green/white	6125.19.050-25L	6125.19.050-10L	6125.19.075-25L	6125.19.075-10L	6125.19.100-25L	6125.19.100-10L	1

- WT-500 printed - the ideal complement to your floor marking.



Text	Length	50 mm	75 mm	VE
ESD	5 m	6125.84.B50-5	6125.84.B75-5	1



Text	Length	50 mm	75 mm	VE
Fork-lift	5 m	6125.78.B50-5	6125.78.B75-5	1



Text	Length	50 mm	75 mm	VE
On request	5 m	6125.99.B50-5	6125.99.B75-5	1

## WT-5229 Dirt resistant floor marking tape

- thin and tear-resistant
- highly visible and easy to clean
- suitable for hygienic, food and clean room areas

The tape has very good chemical resistance to cleaning agents. Due to the special surface coating this material is dirt-repellent and easy to clean.

Application area: Inside  
Material: Polyester  
Thickness: 0.2 mm  
Widths: 50 mm, 75 mm, 100 mm  
Sample: (05)



Colour	50 mm x 15 m	75 mm x 15 m	100 mm x 15 m	VE
yellow	5229.04.050-15	5229.04.075-15	5229.04.100-15	1
red	5229.01.050-15	5229.01.075-15	5229.01.100-15	1
blue	5229.10.050-15	5229.10.075-15	5229.10.100-15	1
green	5229.02.050-15	5229.02.075-15	5229.02.100-15	1
orange	5229.12.050-15	5229.12.075-15	5229.12.100-15	1
white	5229.08.050-15	5229.08.075-15	5229.08.100-15	1
black	5229.07.050-15	5229.07.075-15	5229.07.100-15	1
yellow/black	5229.17.050-15	5229.17.075-15	5229.17.100-15	1
red/white	5229.18.050-15	5229.18.075-15	5229.18.100-15	1
black/white	5229.20.050-15	5229.20.075-15	5229.20.100-15	1

### Storage location marker

Suitable Storage location marker made of this material can be found on **page 34** of this catalogue.



## WT-5429 Floor marking tape with non-slip surface

- thin and tear-resistant
- highly visible and easy to clean
- Slip resistance R10 (DIN 51130)

Similar to the floor marking tape WT-5229, but with a special anti-slip surface R10. The tape is very thin and, in contrast to conventional sanded anti slip tapes, it is more resistant to dirt and can be easily cleaned.

Application area: Inside  
Material: Polyester and PVC  
Thickness: 0.2 mm  
Widths: 50 mm, 75 mm, 100 mm  
Sample: (25)



Colour	50 mm x 10 m	75 mm x 10 m	100 mm x 10 m	VE
yellow	5429.04.050-10	5429.04.075-10	5429.04.100-10	1
red	5429.01.050-10	5429.01.075-10	5429.01.100-10	1
blue	5429.10.050-10	5429.10.075-10	5429.10.100-10	1
green	5429.02.050-10	5429.02.075-10	5429.02.100-10	1
white	5429.08.050-10	5429.08.075-10	5429.08.100-10	1
black	5429.07.050-10	5429.07.075-10	5429.07.100-10	1
yellow/black	5429.17.050-10	5429.17.075-10	5429.17.100-10	1
red/white	5429.18.050-10	5429.18.075-10	5429.18.100-10	1
photoluminescent	5429.29.050-10	5429.29.075-10	5429.29.100-10	1
photolum./black	5429.17FN.050-10	5429.17FN.075-10	5429.17FN.100-10	1

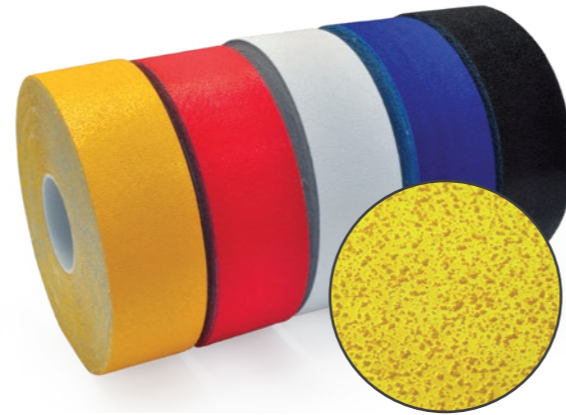
**i** A selection guide to help you find the appropriate marking for your floor can be found on page 5.

## WT-5845 Durable floor marking tape

- retro reflective and anti-slip R11 surface
- can also be used outdoors
- suitable for rough and uneven surfaces

For marking of roadways, working areas, safety areas and storage areas. Can be used on asphalt and concrete paving indoors and outdoors. Quick and easy to apply and extremely wear resistant.

Application area: Indoor and outdoor  
 Material: PU  
 Thickness: 1.6 mm  
 Widths: 50 mm, 75 mm, 100 mm  
 Sample: (03)



Indoor and outdoor use | Use Primer No. 5 for outdoor use!

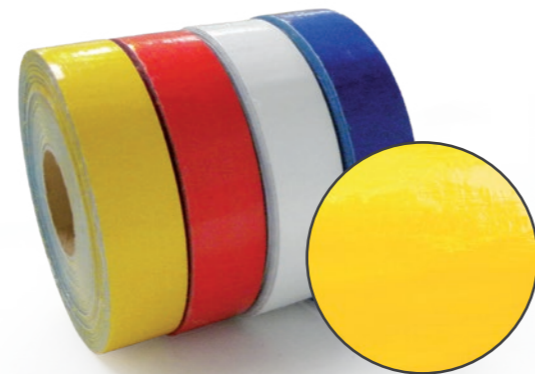
Colour	50 mm x 25 m	50 mm x 12,5 m	75 mm x 25 m	75 mm x 12,5 m	100 mm x 25 m	100 mm x 12,5 m	VE
yellow	5845.04.050	5845.04.050-12	5845.04.075	5845.04.075-12	5845.04.100	5845.04.100-12	1
red	5845.01.050	5845.01.050-12	5845.01.075	5845.01.075-12	5845.01.100	5845.01.100-12	1
blue	5845.10.050	5845.10.050-12	5845.10.075	5845.10.075-12	5845.10.100	5845.10.100-12	1
green	5845.02.050	5845.02.050-12	5845.02.075	5845.02.075-12	5845.02.100	5845.02.100-12	1
white	5845.08.050	5845.08.050-12	5845.08.075	5845.08.075-12	5845.08.100	5845.08.100-12	1
black	5845.07.050	5845.07.050-12	5845.07.075	5845.07.075-12	5845.07.100	5845.07.100-12	1

## WT-5846 Durable floor marking tape

- smooth surface
- suitable for rough and uneven surfaces

For marking of roadways, working areas and storage areas. Can be used on asphalt and concrete paving indoors. Quick and easy to apply and extremely wear resistant.

Application area: Inside  
 Material: PU  
 Thickness: 1.2 mm  
 Widths: 50 mm, 75 mm, 100 mm  
 Sample: (04)



Indoor use

Colour	50 mm x 25 m	50 mm x 12,5 m	75 mm x 25 m	75 mm x 12,5 m	100 mm x 25 m	100 mm x 12,5 m	VE
yellow	5846.04.050	5846.04.050-12	5846.04.075	5846.04.075-12	5846.04.100	5846.04.100-12	1
red	5846.01.050	5846.01.050-12	5846.01.075	5846.01.075-12	5846.01.100	5846.01.100-12	1
blue	5846.10.050	5846.10.050-12	5846.10.075	5846.10.075-12	5846.10.100	5846.10.100-12	1
green	5846.02.050	5846.02.050-12	5846.02.075	5846.02.075-12	5846.02.100	5846.02.100-12	1
white	5846.08.050	5846.08.050-12	5846.08.075	5846.08.075-12	5846.08.100	5846.08.100-12	1

### Accessories

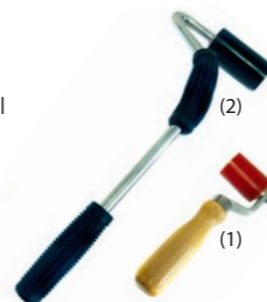


#### Primer No. 5

Primer No. 5 increases the adhesive strength of an adhesive tape on critical surfaces.

**Adhesion primer is always NECESSARY outdoors!**

Primer Nr.5	
250 ml (0,75m <sup>2</sup> )	3051.25.250
1000 ml (3m <sup>2</sup> )	3051.25.1000



#### Pressure roller

Profi-pressure roller for laying selfadhesive floor markings on profiled surfaces.

Andruckroller	
Variante kurz (1)	8002.11.031
Variante lang (2)	8002.00.921

## WT-5847 Tactile floor marking tape - blind guidance system

- optical and tactile differentiation from conventional tapes
- grip and non-slip surface
- economical and fast bonding

Our tactile floor marking tape enables blind and visually impaired people to find their way around. The tape can be bonded to almost all solid substrates. The WT-5847 enables the retrofit of facilities with a guidance system for blind and visually impaired people.

Application area: Indoor and outdoor  
 Material: PU  
 Thickness: 2.6 mm  
 Widths: 30 mm, 50 mm, 75 mm, 100 mm  
 Sample: (21)



Indoor and outdoor use | Use Primer No. 5 for outdoor use! (Page 8)

Colour	30 mm x 12,5 m	50 mm x 12,5 m	75 mm x 12,5 m	100 mm x 12,5 m	VE
white	5847.08.030-12	5847.08.050-12	5847.08.075-12	5847.08.100-12	1

More colours on request!

## Tactile floor marking tape for road marking

- increased grip and visibility in the dark

Our tactile floor marking system WT-5847 is ideally suited for marking roadways, work areas and safety areas due to its high grip and visibility in wet and dark conditions. Can be used on asphalt and concrete paving indoors and outdoors. Quick and easy to apply and extremely wear resistant.

Use Primer No. 5 outdoors! (Page 8)

Colour	50 mm x 12,5 m	75 mm x 12,5 m	100 mm x 12,5 m	VE
white	5847.08.050-12	5847.08.075-12	5847.08.100-12	1

More colours on request!

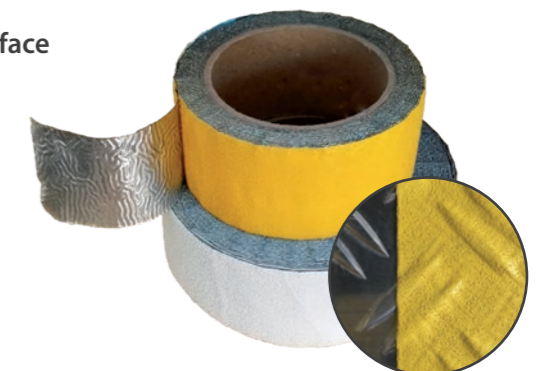


## WT-5645 Adaptable floor marking tape R11

- especially for uneven surfaces, such as floors with anti-slip surface
- adapts to the profile of the substrate
- self-adhesive for indoor and outdoor use

Suitable for non-slip marking of uneven and profiled surfaces as well as floors with anti-slip coating in production or work areas. The aluminium support adapts to the profile of the surface, such as corrugated plate. Also suitable for concrete paving and asphalt floors

Application area: Indoor and outdoor use  
 Material: coated soft aluminium  
 Thickness: 0.6 mm  
 Widths: 50 mm, 75 mm, 100 mm  
 Sample: (06)



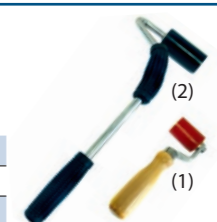
Use Primer No. 5 outdoors! (Page 8)

Colour	50 mm x 12,5 m	75 mm x 12,5 m	100 mm x 12,5 m	VE
yellow	5645.04.050-12	5645.04.075-12	5645.04.100-12	1
white	5645.08.050-12	5645.08.075-12	5645.08.100-12	1

### Accessories

Profi-pressure roller for laying on profiled surfaces

Pressure roller	
Short version (1)	8002.11.031
Long version (2)	8002.00.921



## WT-5125 Universal floor marking tape

- suitable for many floors
- good floor bond

For bonding and marking of roadways, work areas, safety areas or storage areas.

Application area: Inside  
 Material: PVC  
 Thickness: 0.5 mm  
 Widths: 50 mm, 75 mm, 100 mm  
 Sample: 07



Colour	50 mm x 25 m	50 mm x 10 m	75 mm x 25 m	75 mm x 10 m	100 mm x 25 m	100 mm x 10 m	VE
yellow	5125.04.050	5125.04.050-10	5125.04.075	5125.04.075-10	5125.04.100	5125.04.100-10	1
red	5125.01.050	5125.01.050-10	5125.01.075	5125.01.075-10	5125.01.100	5125.01.100-10	1
light blue	5125.03.050	5125.03.050-10	5125.03.075	5125.03.075-10	5125.03.100	5125.03.100-10	1
blue	5125.10.050	5125.10.050-10	5125.10.075	5125.10.075-10	5125.10.100	5125.10.100-10	1
light green	5125.15.050	5125.15.050-10	5125.15.075	5125.15.075-10	5125.15.100	5125.15.100-10	1
green	5125.02.050	5125.02.050-10	5125.02.075	5125.02.075-10	5125.02.100	5125.02.100-10	1
orange	5125.12.050	5125.12.050-10	5125.12.075	5125.12.075-10	5125.12.100	5125.12.100-10	1
pink	5125.25.050	5125.25.050-10	5125.25.075	5125.25.075-10	5125.25.100	5125.25.100-10	1
purple	5125.26.050	5125.26.050-10	5125.26.075	5125.26.075-10	5125.26.100	5125.26.100-10	1
white	5125.08.050	5125.08.050-10	5125.08.075	5125.08.075-10	5125.08.100	5125.08.100-10	1
light grey	5125.06.050	5125.06.050-10	5125.06.075	5125.06.075-10	5125.06.100	5125.06.100-10	1
dark grey	5125.11.050	5125.11.050-10	5125.11.075	5125.11.075-10	5125.11.100	5125.11.100-10	1
black	5125.07.050	5125.07.050-10	5125.07.075	5125.07.075-10	5125.07.100	5125.07.100-10	1
yellow/black	5125.17.050	5125.17.050-10	5125.17.075	5125.17.075-10	5125.17.100	5125.17.100-10	1
red/white		5125.18.050-10		5125.18.075-10		5125.18.100-10	1
blue/white		5125.21.050-10		5125.21.075-10		5125.21.100-10	1
green/white		5125.19.050-10		5125.19.075-10		5125.19.100-10	1
black/white		5125.20.050-10		5125.20.075-10		5125.20.100-10	1

Suitable storage location marking can be found on page 24



## WT-5126 Floor marking points

- simple bonding due to mounting foil
- fast replacement of damaged points

The marking points can be bonded fast and easily with the mounting foil. If a point is damaged, it can be replaced quickly.

Application area: Indoors  
 Material: PVC  
 Thickness: 0.5 mm  
 Widths: 50 mm, 75 mm  
 Sample: 07



Colour	50 mm x 25 m	50 mm x 10 m	75 mm x 25 m	75 mm x 10 m	VE
yellow	5126.04.050	5126.04.050-10	5126.04.075	5126.04.075-10	1
red	5126.01.050	5126.01.050-10	5126.01.075	5126.01.075-10	1
blue	5126.10.050	5126.10.050-10	5126.10.075	5126.10.075-10	1
green	5126.02.050	5126.02.050-10	5126.02.075	5126.02.075-10	1
white	5126.08.050	5126.08.050-10	5126.08.075	5126.08.075-10	1
black	5126.07.050	5126.07.050-10	5126.07.075	5126.07.075-10	1

Distance between points at 50 mm



Distance between points at 75 mm



## WT-5124 Strips for floor marking

- simple bonding due to mounting foil
- fast replacement of damaged strips

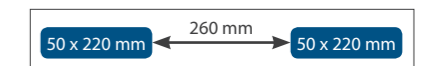
The marking strips can be bonded fast and easily with the mounting foil. If a strip is damaged, it can be replaced quickly.

Application area: Indoors  
 Material: PVC  
 Thickness: 0.5 mm  
 Widths: 50 mm, 75 mm  
 Length: 220 mm  
 Sample: 07



Colour	50 mm x 25 m	50 mm x 10 m	75 mm x 25 m	75 mm x 10 m	VE
yellow	5124.04.050	5124.04.050-10	5124.04.075	5124.04.075-10	1
red	5124.01.050	5124.01.050-10	5124.01.075	5124.01.075-10	1
blue	5124.10.050	5124.10.050-10	5124.10.075	5124.10.075-10	1
green	5124.02.050	5124.02.050-10	5124.02.075	5124.02.075-10	1
white	5124.08.050	5124.08.050-10	5124.08.075	5124.08.075-10	1
black	5124.07.050	5124.07.050-10	5124.07.075	5124.07.075-10	1

Distance between strips 50 mm



Distance between strips 75 mm



## WT-5160 Standard floor marking tape

- Quick to apply and easy to remove
- good floor bond

For fast, simple bonding and marking of traffic lanes, work areas, safety areas, storage areas or walls and edges.

Application area: Inside  
Material: PVC  
Thickness: 0.16 mm  
Widths: 50 mm, 75 mm

Colour		50 mm x 33 m	75 mm x 33 m	VE
yellow		5160.04.050	5160.04.075	1
red		5160.01.050	5160.01.075	1
blue		5160.10.050	5160.10.075	1
green		5160.02.050	5160.02.075	1
orange		5160.12.050	5160.12.075	1
white		5160.08.050	5160.08.075	1
light grey		5160.06.050		1
black		5160.07.050	5160.07.075	1
yellow/black		5160.17.050	5160.17.075	1
red/white		5160.18.050	5160.18.075	1



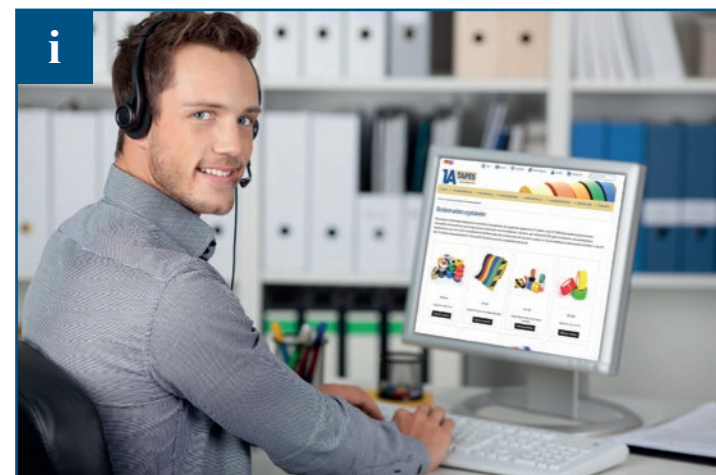
## WT-5164 Standard floor marking tape with protective laminate

- increased abrasion resistance due to protective laminate
- Quick to apply and easy to remove
- good floor bond

For quick and easy bonding and marking of traffic lanes, work areas, safety areas, storage areas, walls or edges. WT-5164 has the same characteristics as WT-5160, additionally the surface is coated with a protective laminate.

Application area: Inside  
Material: PVC  
Thickness: 0.2 mm  
Widths: 50 mm, 75 mm

Colour		50 mm x 33 m	75 mm x 33 m	VE
black		5164.07.050	5164.07.075	1
yellow/black		5164.17.050	5164.17.075	1
red/white		5164.18.050	5164.18.075	1



**You have questions regarding our floor marking tapes?**

**We can help you choose the one most suitable for your needs.**

**Give us a call! ☎ +49 36605 99130**

**Or visit our website at:**  
[www.1atapes.com](http://www.1atapes.com)

## WT-5125 | 5415 Printed floor marking

- Floor marking with individual print
- suitable for many floors
- good floor bond

Suitable for use with lifting trucks, forklifts and cleaning machines. For marking traffic lanes, work areas, safety areas and storage areas.

Application area: Inside  
Standard widths: 50 mm, 75 mm  
Standard lengths: 600 mm, 5m

Material: **PVC**  
Thickness: 0.5 mm  
Application area: Inside  
Sample: (08)

- durable
- for smooth and gap-free surfaces

Material: **Anti-slip 5415**  
Thickness: 0.8 mm  
Application area: Inside  
Sample: (09)

- wear-resistant PVC with non-slip surface
- Slip class R11



Material	Length	50 mm	75 mm	VE
PVC	60 cm	5125.59/037.B50-06	5125.59/037.B75-06	1
PVC	5 m	5125.59/037.B50-5	5125.59/037.B75-5	1
Anti-slip	60 cm	5415.59/037.B50-06	5415.59/037.B75-06	1

### Practical examples:



Material	Length	50 mm	75 mm	VE
PVC	60 cm	5125.17.B50-06	5125.17.B75-06	1
PVC	5 m	5125.17.B50-5	5125.17.B75-5	1
Anti-slip	60 cm	5415.17.B50-06	5415.17.B75-06	1



Material	Length	50 mm	75 mm	VE
PVC	60 cm	5125.18.B50-06	5125.18.B75-06	1
PVC	5 m	5125.18.B50-5	5125.18.B75-5	1
Anti-slip	60 cm	5415.18.B50-06	5415.18.B75-06	1



Material	Length	50 mm	75 mm	VE
photoluminescent				
Anti-slip	60 cm	5427.17.B50-06	5427.17.B75-06	1



Material	Length	50 mm	75 mm	VE
photoluminescent				
Anti-slip	60 cm	5427.49/1.B50-06	5427.49/1.B75-06	1



Material	Length	50 mm	75 mm	VE
PVC	60 cm	5125.49.B50-06	5125.49.B75-06	1
PVC	5 m	5125.49.B50-5	5125.49.B75-5	1
Anti-slip	60 cm	5415.49.B50-06	5415.49.B75-06	1



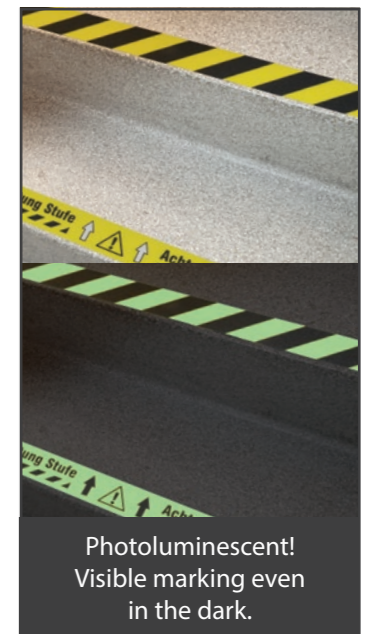
Material	Length	50 mm	75 mm	VE
PVC	60 cm	5125.49/1.B50-06	5125.49/1.B75-06	1
PVC	5 m	5125.49/1.B50-5	5125.49/1.B75-5	1
Anti-slip	60 cm	5415.49/1.B50-06	5415.49/1.B75-06	1



Material	Length	50 mm	75 mm	VE
PVC	60 cm	5125.78.B50-06	5125.78.B75-06	1
PVC	5 m	5125.78.B50-5	5125.78.B75-5	1
Anti-slip	60 cm	5415.78.B50-06	5415.78.B75-06	1



Material	Length	50 mm	75 mm	VE
PVC	60 cm	5125.84.B50-06	5125.84.B75-06	1
PVC	5 m	5125.84.B50-5	5125.84.B75-5	1
Anti-slip	60 cm	5415.84.B50-06	5415.84.B75-06	1



Photoluminescent!  
Visible marking even in the dark.

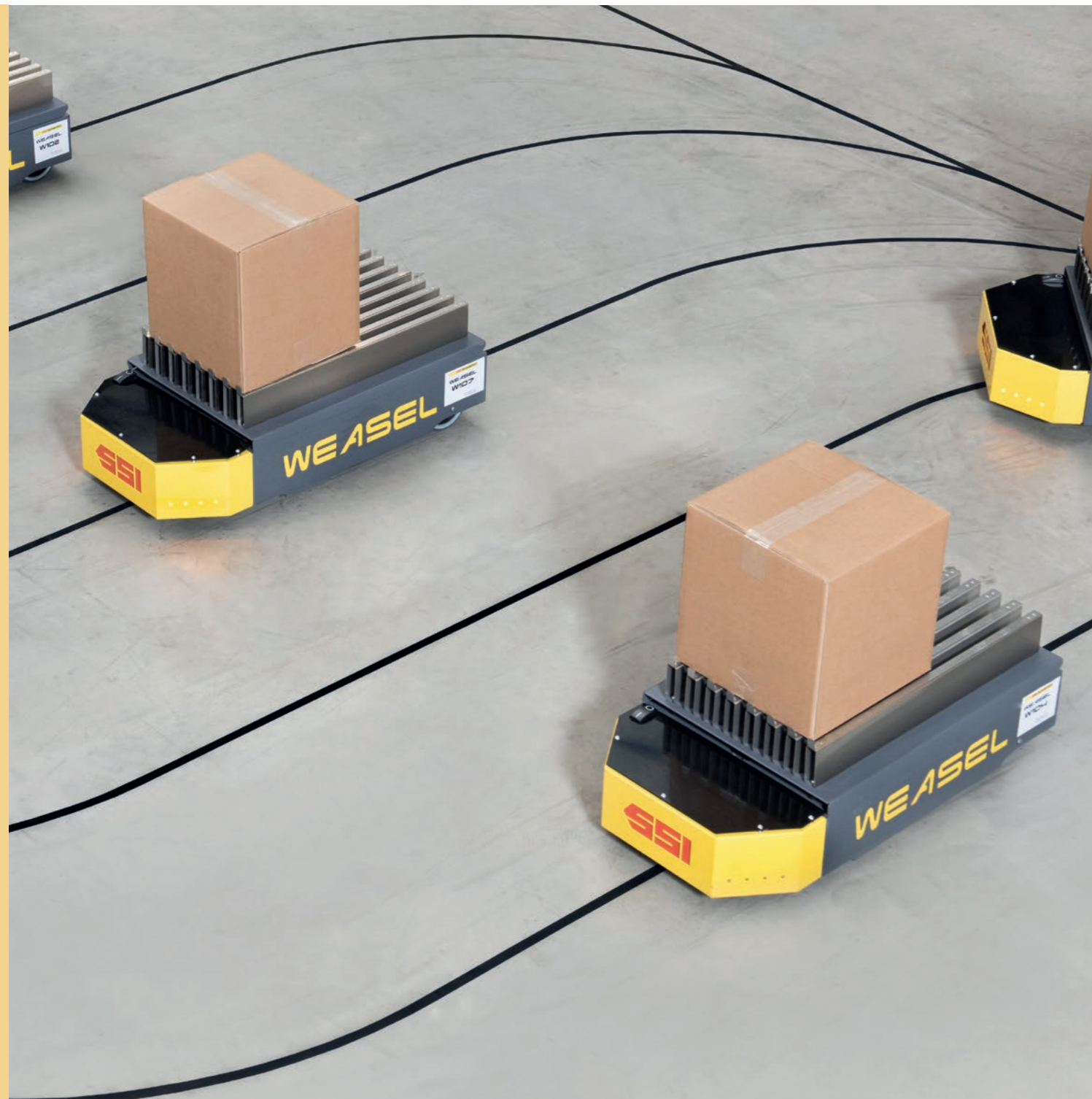


# Optical tracking for driverless transport systems FTS

**professional ■ flexible ■ fast**

The self-adhesive optical tracking system for driverless transport systems is flexible and easy to install. In addition to the simple route, modern tracking systems can also read coded guidance systems. Our tracking is also available with corresponding coding.

Do you have any questions concerning optical tracking? Give us a call! ☎ +49 36605 99130

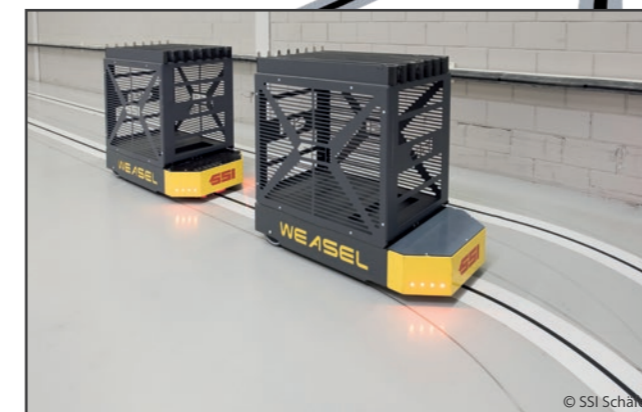


## WT-5128 Optical tracking for driverless transport systems (FTS)

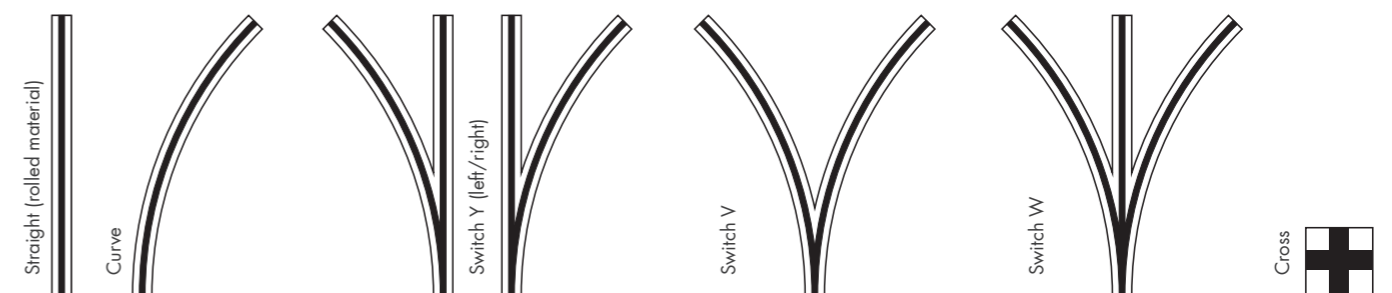
- fast bonding of track nets
- greatest possible flexibility

Application area: Inside  
Material: PVC (silk gloss), polycarbonate (matt)  
Thickness: 1.6 mm

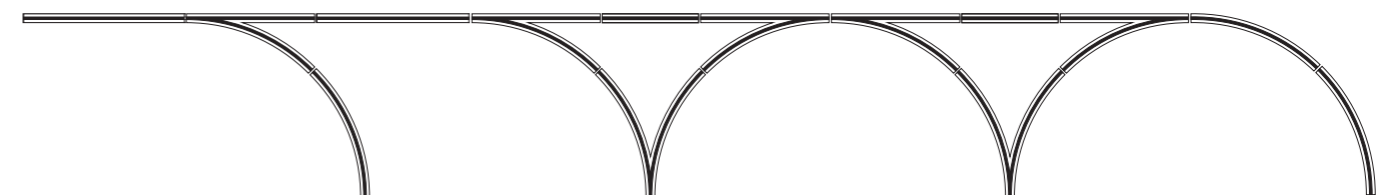
**We manufacture tracks according to your specifications and requirements!**  
Offers on request.



Plan your track with the following elements:



And create your own individual track network:



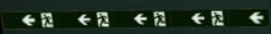


# Photoluminescent marking

high luminosity ■ failure-resistant,  
independent of electricity ■ life-saving

Suitable as a guide mark in the dark or in the case of thick smoke.  
Safe escape route identification by high luminosity with a luminance of 170/24 mcd/m<sup>2</sup> (10/60min).  
The photoluminescent safety guidance system consists of phosphorescent components that glow after excitation by light without additional energy supply.

Material: 15



Marking tape

Material	Width x Length	Item number	VE
PVC	25 mm x 10 m	5127.29.025	1
	50 mm x 10 m	5127.29.050	1
	75 mm x 10 m	5127.29.075	1



Marking tape with escape sign left

Material	Width x Length	Item number	VE
PVC	25 mm x 10 m	5127.3-Li.B25	1
	50 mm x 10 m	5127.3-Li.B50	1
	75 mm x 10 m	5127.3-Li.B75	1



Marking tape with escape sign right

Material	Width x Length	Item number	VE
PVC	25 mm x 10 m	5127.3-Re.B25	1
	50 mm x 10 m	5127.3-Re.B50	1
	75 mm x 10 m	5127.3-Re.B75	1



Marking tape with direction arrow green

Material	Width x Length	Item number	VE
PVC	25 mm x 10 m	5127.1-02.B25	1
	50 mm x 10 m	5127.1-02.B50	1
	75 mm x 10 m	5127.1-02.B75	1



Warning marking tape green

Material	Width x Length	Item number	VE
PVC	25 mm x 10 m	5127.19.B25	1
	50 mm x 10 m	5127.19.B50	1
	75 mm x 10 m	5127.19.B75	1



Marking tape with direction indication green

Material	Width x Length	Item number	VE
PVC	25 mm x 10 m	5127.2-02.B25	1
	50 mm x 10 m	5127.2-02.B50	1
	75 mm x 10 m	5127.2-02.B75	1



Marking tape with direction arrow black

Material	Width x Length	Item number	VE
PVC	25 mm x 10 m	5127.1-07.B25	1
	50 mm x 10 m	5127.1-07.B50	1
	75 mm x 10 m	5127.1-07.B75	1



Warning marking tape black

Material	Width x Length	Item number	VE
PVC	25 mm x 10 m	5127.17.B25	1
	50 mm x 10 m	5127.17.B50	1
	75 mm x 10 m	5127.17.B75	1



Marking tape with direction indication black

Material	Width x Length	Item number	VE
PVC	25 mm x 10 m	5127.2-07.B25	1
	50 mm x 10 m	5127.2-07.B50	1
	75 mm x 10 m	5127.2-07.B75	1



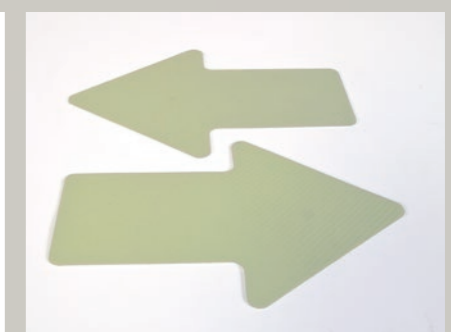
Stair markers

Material	Width x Length	Item number	Paar
PVC	37,5mm x 160mm	5127.Wi11.37	5
	47,5mm x 160mm	5127.Wi11.47	5



Round blanks

Material	Größe Ø	Item number	VE
PVC	50 mm	5127.L72-50	10
	75 mm	5127.L72-75	10



Arrows

Material	Width x Length	Item number	VE
PVC	90 mm x 145 mm	5127.00.003	10

# Reflective marking

visible from afar ■ certified ■ versatile

Reflective and self-adhesive films for use in hazardous areas, vehicles, containers or structures. Reflective markings RA1 and RA2 with individual print and special dimensions possible.

Do you have questions regarding the correct reflective marking?  
Give us a call! ☎ +49 036605 99130



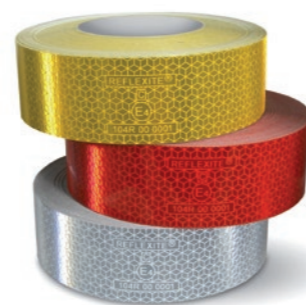
## WT-5218 Truck and trailer contour marking

- ideal marking for trucks, tankers, fixed bodies and tarpaulins
- self-adhesive and washable

Reflective and self-adhesive foils for rear and side marking considerably improve the visibility of commercial vehicles.

- certified according to ECE 104 class C
- no risk of tearing of the tape
- excellent visibility at great distance
- no edge sealing required
- easy handling and attachment
- robust against different cleaning method

Version	Colour	50 mm x 12,5 m	50 mm x 50 m	VE
Fixed structure Roll	yellow	5218.104.50-12	5218.104.50-50	1
	red	5218.101.50-12	5218.101.50-50	1
	white	5218.108.50-12	5218.108.50-50	1
Tank Roll with sticker	yellow	5218.204.50-12	5218.204.50-50	1
	red	5218.201.50-12	5218.201.50-50	1
	white	5218.208.50-12	5218.208.50-50	1
Tarpaulin Roll	yellow	5218.304.50-12	5218.304.50-50	1
	red	5218.301.50-12	5218.301.50-50	1
	white	5218.308.50-12	5218.308.50-50	1
Tarpaulin Roll with sticker	yellow	5218.404.50-12	5218.404.50-50	1
	red	5218.401.50-12	5218.401.50-50	1
	white	5218.408.50-12	5218.408.50-50	1



## WT-5219 Vehicle warning markings

- ideal marking of vehicles with special rights
- self-adhesive and washable

The printed reflective foils are specially designed for the warning marking of commercial vehicles.

- according to DIN 30710
- conforms to class RA2
- weather resistant
- easy handling and attachment
- robust against different cleaning methods
- excellent visibility over long distances



	Colour	141 mm x 1 m	141 mm x 4,5 m	141 mm x 9 m	282 mm x 1 m	282 mm x 4,5 m	282 mm x 9 m
Passenger car warning markings • non-flexible, prismatic • Class RA2, structure C	red/white	5219.S18.141-mL 1 m pointing left	5219.S18.141-4 every 1 roll pointing left and pointing right	5219.S18.141-9 every 1 roll pointing left and pointing right	5219.S18.282-mL 1 m pointing left	5219.S18.282-4 every 1 roll pointing left and pointing right	5219.S18.282-9 every 1 roll pointing left and pointing right
		5219.S18.141-mR 1 m pointing right			5219.S18.282-mR 1 m pointing right		

## WT-5219 Container warning markings

- Reflective marking for containers, waste bins and replaceable containers

The highly reflective markings are especially designed for containers, waste and replaceable containers. Also suitable on public roads.

- conforms to DIN 67520 and DIN 6171
- class RA2, structure C
- certified by the BAST
- highly reflective, flexible prismatic foil
- excellent adhesion on painted surfaces
- weather resistant



	Colour	141 mm x 705 mm	141 mm x 705 mm	141 mm x 705 mm
Container warning markings • highly reflective • class RA2, structure C	red/white	5219.SLi.141 1 strip pointing left	5219.SRe.141 1 strip pointing right	5219.SRL.141 1 set (8 strips) Pointing left and right

## WT-5219 Reflective warning marking tape

- for noticeable marking of danger points

An important prerequisite for preventing production accidents and to reduce the risk of injury at danger points, is the correct marking of danger points.

- available in two versions
- according to DIN 4844
- universal adhesive for use on a wide variety of surfaces



	Colour	50 mm x 5 m	50 mm x 25 m	100 mm x 5 m	100 mm x 25 m	VE
Reflective - High Intensity Grade for hazardous locations with high visibility requirements • Class RA2, structure B	yellow/black	5219.R17.50-5	5219.R17.50-25	5219.R17.100-5	5219.R17.100-25	1
	red/white	5219.R18.50-5	5219.R18.50-25	5219.R18.100-5	5219.R18.100-25	1
Reflective - Commercial Grade • for less dangerous areas • Class RA1, structure A	yellow/black	5219.T17.50-5	5219.T17.50-25	5219.T17.100-5	5219.T17.100-25	1
	red/white	5219.T18.50-5	5219.T18.50-25	5219.T18.100-5	5219.T18.100-25	1

# Cloth tape

**universal ■ self-adhesive ■ high tear-resistance**

Cloth tapes are self-adhesive and flexible. For all requirements for repair and fastening work as well as for bonding and marking on rough or difficult surfaces such as steel girders or walls.

Do you have any questions about the cloth tape? Give us a call! ☎ +49 36605 99130



## WT-5561 Cloth tape

- quick and noticeable marking of danger points
- suitable for temporary bonding

For marking danger points, repair and fastening work, such as connecting flanges and joints on heating and fresh air ducts or pipelines, sealing and closing of glass, plastic and metal or bundling cables as well as marking, fixing and edging in industry due to the variety of colours. The material is tear-resistant, abrasion-resistant and can be removed from most surfaces.

Application area: Inside  
Material: PE-coated cloth - gloss finish  
Thickness: 0.29 mm  
Widths: 50 mm, 75 mm, 100 mm



**Direct employees or guests to the left or right past the obstacle or the point of entry!**

**i Warning marking information**

The yellow/black marking tapes are used for gluing on and at immovable objects. For example, sharp edges on production machines, stair treads and doors, passageways or on obstacles.

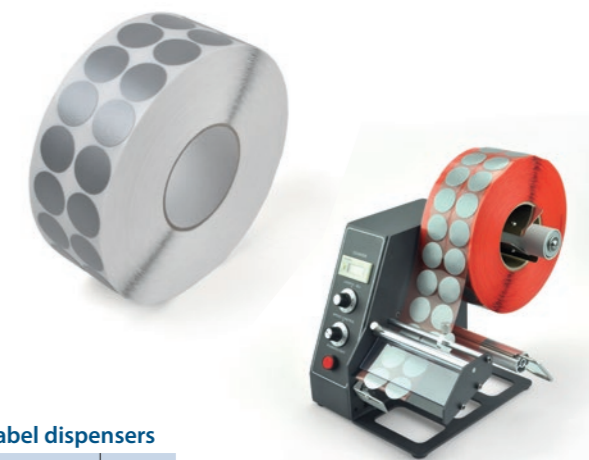
Colour		25 mm x 50 m	38 mm x 50 m	50 mm x 50 m	75 mm x 50 m	100 mm x 50 m	VE
yellow/black	pointing left	5561.17.025-Li	5561.17.038-Li	5561.17.050-Li	5561.17.075-Li	5561.17.100-Li	1
yellow/black	pointing right	5561.17.025-Re	5561.17.038-Re	5561.17.050-Re	5561.17.075-Re	5561.17.100-Re	1
yellow		5561.04.025	5561.04.038	5561.04.050	5561.04.075	5561.04.100	1
black		5561.07.025	5561.07.038	5561.07.050	5561.07.075	5561.07.100	1
white		5561.08.025	5561.08.038	5561.08.050	5561.08.075	5561.08.100	1
red		5561.01.025	5561.01.038	5561.01.050	5561.01.075	5561.01.100	1
green		5561.02.025	5561.02.038	5561.02.050	5561.02.075	5561.02.100	1
light blue		5561.03.025	5561.03.038	5561.03.050	5561.03.075	5561.03.100	1
blue		5561.10.025	5561.10.038	5561.10.050	5561.10.075	5561.10.100	1
brown		5561.05.025	5561.05.038	5561.05.050	5561.05.075	5561.05.100	1
silver grey		5561.13.025	5561.13.038	5561.13.050	5561.13.075	5561.13.100	1

## Cloth adhesive patches

- quick and easy to attach
- universal application possibilities

The adhesive cloth adhesive patches are made of PE-coated cloth tape and have a natural rubber adhesive. They are universally applicable and suitable for marking or attachment on objects, as marking points or in the industrial sector for attaching labels to boxes or goods. The adhesive patches are characterised by very good immediate adhesion and an easy, residue-free removal.

Size: 30 mm (4000 patches per roll)



### WT-5561 - Standard

Colour		30 mm	VE
yellow		5561.04.R030	1
red		5561.01.R030	1
blue		5561.10.R030	1
green		5561.02.R030	1
white		5561.08.R030	1
silver grey		5561.13.R030	1
black		5561.07.R030	1

### WT-5561 - especially for label dispensers

Colour		30 mm	VE
yellow		5561.04.RF030	1
red		5561.01.RF030	1
blue		5561.10.RF030	1
green		5561.02.RF030	1
white		5561.08.RF030	1
silver grey		5561.13.RF030	1
black		5561.07.RF030	1

### Label dispensers

Electronic label dispenser with adjustable conveyor speed and projection. Built-in and readable label counter.

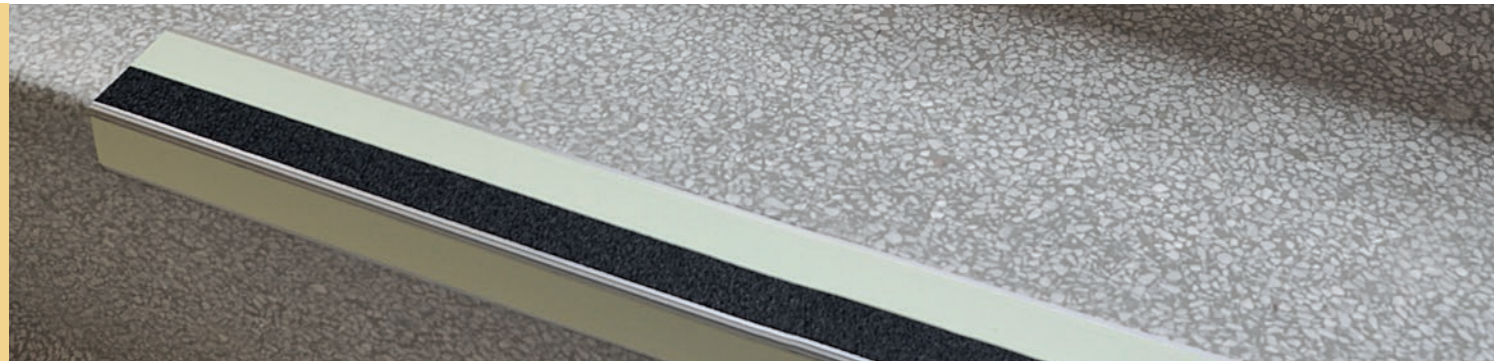
Elektronischer Etikettenspender	
Item number	8000.1150.D

# Anti-slip tapes

**quick bond ■ immediate use ■ durable**

Anti-slip coverings are self-adhesive, durable, resistant and prevent accidents from slipping and falling accidents. Suitable for non-slip adhesion and marking of traffic lanes, work areas, warehouses, production rooms, indoor, outdoor and wet areas.

**Do you have any questions regarding the right anti-slip covering?  
Give us a call! ☎ +49 36605 99130**



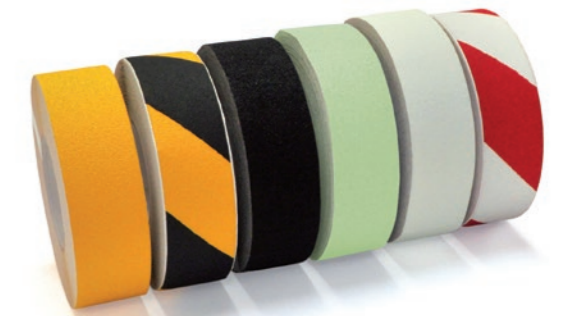
## WT-5411 Anti-slip tape - Standard

- Slip resistance R13 (DIN 51130)
- for medium to high loads
- self-adhesive for indoor and outdoor use

Suitable for non-slip floor marking in production rooms, warehouses, work areas or traffic lanes. Anti-slip warning markings in yellow/black or red/white are used to identify danger points.

Application area: Indoors and outdoors  
Material: mineral granulation embedded in synthetic resin  
Thickness: 0.8 - 1.0 mm  
Widths: 25 mm, 50 mm

Colour	25 mm x 6 m	25 mm x 18 m	50 mm x 6 m	50 mm x 18 m	VE
yellow	5411.04.1025	5411.04.0025	5411.04.1050	5411.04.0050	1
yellow public	5411.47.1025	5411.47.0025	5411.47.1050	5411.47.0050	1
black	5411.07.1025	5411.07.0025	5411.07.1050	5411.07.0050	1
white	5411.08.1025	5411.08.0025	5411.08.1050	5411.08.0050	1
blue	5411.10.1025	5411.10.0025	5411.10.1050	5411.10.0050	1
light blue	5411.03.1025	5411.03.0025	5411.03.1050	5411.03.0050	1
green	5411.02.1025	5411.02.0025	5411.02.1050	5411.02.0050	1
brown	5411.05.1025	5411.05.0025	5411.05.1050	5411.05.0050	1
red	5411.01.1025	5411.01.0025	5411.01.1050	5411.01.0050	1
neon orange	5411.12.1025	5411.12.0025	5411.12.1050	5411.12.0050	1
transparent	5411.09.1025	5411.09.0025	5411.09.1050	5411.09.0050	1
photoluminescent	5416.04.1025	5416.04.0025	5416.04.1050	5416.04.0050	1
grey	5411.06.1025	5411.06.0025	5411.06.1050	5411.06.0050	1
yellow/black	5411.17.1025	5411.17.0025	5411.17.1050	5411.17.0050	1
red/white	5411.18.1025	5411.18.0025	5411.18.1050	5411.18.0050	1



## WT-5409 Anti-slip - stair edge profile

- Durable solution for indoor and outdoor staircases
- self-adhesive and screw-in

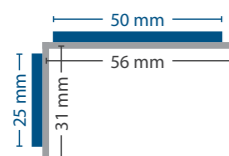
The profiles consist of an aluminium supporting profile and a mineral granulation embedded in synthetic resin. It produces a very strong slip-resistance, which is suitable for street and work shoes. Self-adhesive and pre-drilled fixing holes underneath the anti-slip coating enable easy mounting.



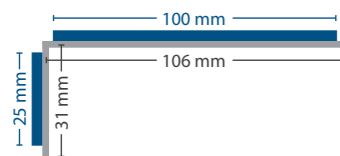
Slip class R13 according to DIN 51130  
Application area: Indoor and outdoor

Overall thickness: 2.0 mm  
Profile thickness: 1.2 mm

Version: Narrow application  
Anti-slip coating front: 25 mm / top: 50 mm



Version: Wide application  
Anti-slip coating front: 25 mm / top: 100 mm



	Colour	Version	Length 600 mm	Length 800 mm	Length 1000 mm	VE
	black	narrow 25 mm x 50 mm	5409.01.050-600	5409.01.050-800	5409.01.050-1000	1
	black	wide 25 mm x 100 mm	5409.01.100-600	5409.01.100-800	5409.01.100-1000	1
	yellow/black	narrow 25 mm x 50 mm	5409.02.050-600	5409.02.050-800	5409.02.050-1000	1
	yellow/black	wide 25 mm x 100 mm	5409.02.100-600	5409.02.100-800	5409.02.100-1000	1
	yellow public	narrow 25 mm x 50 mm	5409.03.050-600	5409.03.050-800	5409.03.050-1000	1
	yellow public	wide 25 mm x 100 mm	5409.03.100-600	5409.03.100-800	5409.03.100-1000	1
	black/ photoluminescent/ black	narrow 25 mm x 50 mm	5409.04.050-600	5409.04.050-800	5409.04.050-1000	1
	black/ photoluminescent/ black	wide 25 mm x 100 mm	5409.04.100-600	5409.04.100-800	5409.04.100-1000	1
	photoluminescent/ black/ photoluminescent	narrow 25 mm x 50 mm	5409.05.050-600	5409.05.050-800	5409.05.050-1000	1
	photoluminescent/ black/ photoluminescent	wide 25 mm x 100 mm	5409.05.100-600	5409.05.100-800	5409.05.100-1000	1

## WT-5412 Anti-slip tape - Extra coarse

- Slip resistance R13 (DIN 51130)
- ideal for high pedestrian frequency or coarse soiling
- self-adhesive for indoor and outdoor use

Suitable for non-slip floor marking in production rooms and warehouses, working areas or traffic lanes. Anti-slip warning markings in yellow/black or red/white are used to identify danger points.

Application area: Indoors and outdoors  
Material: mineral granulation embedded in synthetic resin  
Thickness: 0.8 - 1.0 mm  
Widths: 25 mm, 50 mm

Colour	25 mm x 6 m	25 mm x 18 m	50 mm x 6 m	50 mm x 18 m	VE
yellow	5412.04.1025	5412.04.0025	5412.04.1050	5412.04.0050	1
black	5412.07.1025	5412.07.0025	5412.07.1050	5412.07.0050	1



### i Information on slip resistance / ASR A.1.5/1,2

Slip resistance is a property of the floor surface that effectively prevents slipping. Floor coverings are subdivided into five groups (from R9 to R13) depending on their anti-slip properties, whereby floor coverings with group R9 meet the lowest requirements for anti-slip properties and those with group R13 meet the highest requirements for anti-slip properties. The classification groups are exclusively regarded as minimum requirements for public spaces and flat surfaces. It does not mean that a person may not slip on these surfaces. Effective accident prevention is always the highest priority.

**Group R9**  
low friction coefficient  
Non-slip up to 3° - 10° inclination  
e.g. stairs, entrance area

**Group R11**  
increased static friction coefficient  
Non-slip up to 19° - 27° inclination  
e.g. vehicle repair, beverage filling

**Group R13**  
very high coefficient of static friction  
Non-slip up to inclination > 35°  
e.g. flow-through tank

**Group R10**  
normal coefficient of static friction  
Non-slip up to 10° - 19° inclination  
e.g. sanitary rooms

**Group R12**  
high coefficient of static friction  
Non-slip up to 27° - 35° inclination  
e.g. cold storage rooms, waste water treatment plants

## WT-5414 Anti-slip tape – conformable

- Slip resistance R13 (DIN 51130)
- particularly for uneven surfaces
- self-adhesive for indoor and outdoor use

Suitable for non-slip marking of uneven, rough and profiled surfaces. Areas in production or work areas. The aluminium carrier fits the profile of the underground, such as ribbed plate.

Application area: Indoor and outdoor  
 Material: mineral granulation embedded in synthetic resin  
 Thickness: 0.8 - 1.0 mm  
 Widths: 25 mm, 50 mm



Colour	25 mm x 6 m	25 mm x 18 m	50 mm x 6 m	50 mm x 18 m	VE
black	5414.07.1025	5414.07.0025	5414.07.1050	5414.07.0050	1
yellow	5414.04.1025	5414.04.0025	5414.04.1050	5414.04.0050	1
yellow/black	5414.17.1025	5414.17.0025	5414.17.1050	5414.17.0050	1



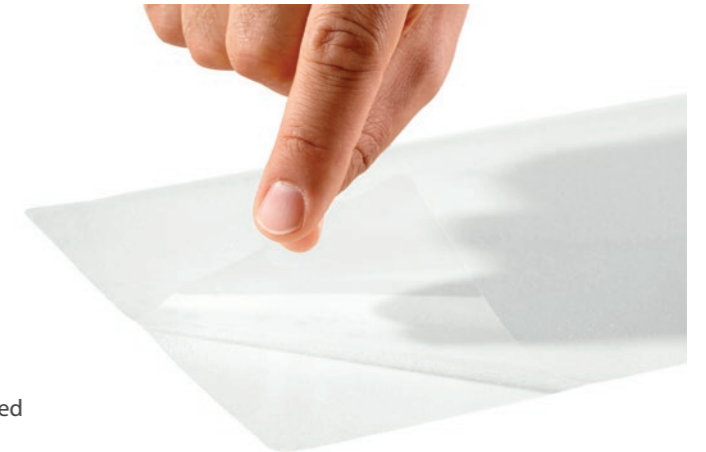
## WT-5420 Anti-slip foil – Highly transparent

- Special foil with anti-slip effect
- Slip resistance R12 according to DIN 51130  
C according to DIN 51097
- suitable for wet areas and sanitary areas
- transparent and wafer-thin

The foil consists of a high-quality plastic with embedded, slip-resistant micro-beads. The beads provide anti-slip protection. In addition to floor marking tapes, floor signs or floor advertising, stairs and wet areas such as showers and changing rooms can be equipped with this film. Due to the full-surface bonding, a secure hold is achieved and at the same time dirt on the edges is prevented from collecting and infiltrating the covering. The material, which is just a mere 0.2 mm thick, only appears on closer inspection and reduces the risk of tripping and slipping to a minimum.

R12 according to DIN 51130  
 in wet area class C according to DIN 51097  
 suitable for industry and trade  
 Self-adhesive PVC film  
 Application area: Indoor

Colour: transparent  
 Thickness: 0.2 mm  
 adhesives: acrylate adhesive  
 Surface: textured, fine rough surface  
 Sample: 24

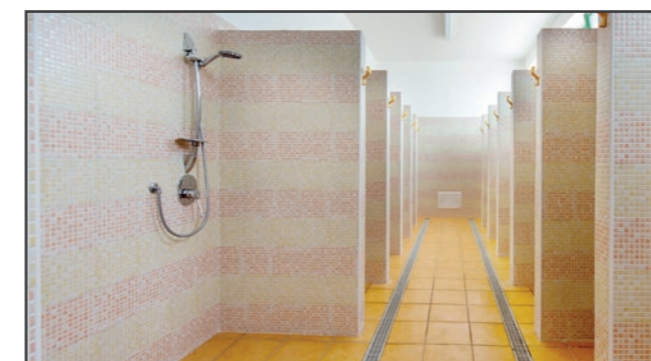
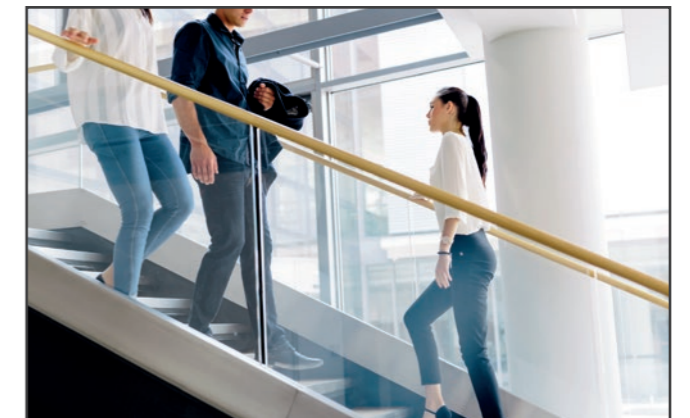


## Anti-slip floor signs - Individual

- non-slip surface with durable print image
- different materials for different surfaces and loads
- individual printing and contour cutting possible



We can advise you on the choice of the right material - just give us a call!  
**Tel. +49 36605 99130**



Example of half-round step

Shape		Dimensions in mm	Item number	VE
Small strip		20 x 450	5420.09.020-ST	8
Large strip		30 x 640	5420.09.030-ST	17
Round		90	5420.09.R90	10
Square		140 x 140	5420.09.140-140	10

Shape		Dimensions in mm	Item number	VE
Step Half-round		200 x 700	5420.09.HR.200-700	1
Step Rectangle		200 x 700	5420.09.RE.200-700	1
Stripes		50 x 600	5420.09.050-600	8
Stripes		50 x 800	5420.09.075-800	8

# Labels for storage and shelves

There are no limits to the design of our labels. Regardless of whether you need simple warehouse labels or want to set up a complete control system in your warehouse, we can implement the appropriate solution. For this purpose, we manufacture customised labels for a wide variety of requirements and applications.

## Material overview:

**PVC foil:** 0.1 mm thick | self-adhesive | for smooth and gap-free substrates | sample: ⑫

**Magnetic foil:** 1.0 - 3.0 mm thick | self-adhesive and reusable | for ferrous substrates

**Polycarbonate:** 1.0 mm thick | for smooth surfaces | extremely robust | sample: ⑪

**Foil RA1:** 0.7 mm thick | self-adhesive | for smooth and gap-free surfaces | highly visible

**Do you have any questions regarding the right storage or shelf label?**

**Give us a call! ☎ +49 36605 99130**



Suitable for self-adhesive or self-sticking marking of all warehouse and storage locations, such as racks, shelves or traverses. From simple foil labels to man-down or reflective labels up to magnetic labels, we manufacture individually according to your requirements. All shapes, colours, materials and adhesive properties can be adapted to your needs.

- different materials
- various design options
- customizable with your logo
- size and shape freely selectable
- adjustable colour coding system
- all barcode systems
- individual labels or roll goods



For more information, please contact us: **+49 36605 99130**  
We will be happy to send you sample's of the material without obligation before placing your order.

**We manufacture according to your specifications! For fast delivery we need the following information:**

**Material:**  
PVC foil, magnetic foil, PC, reflective foil RA1

**Dimensions:**  
Height x Width, e.g. 50 x 250 mm, 100 x 120 mm  
Dimensions can be determined individually

**Colour:**  
e.g. black on yellow, black on white  
all colour combinations possible

**Text/Content**  
e.g. according to specification by Excel list

**Barcode system:**  
e.g. Code128, Code39, QR-Code

**Quantity**

## Foil labels

- for smooth and gap-free surfaces
- abrasion-resistant pressure
- residue-free removable

Material: PVC foil  
Thickness: 0.2 mm  
Adhesive: Acrylate  
Application area: Inside  
Surface: matt  
Laminate: on request



## Polycarbonate labels

- extremely resistant
- suitable for levelling the profile of the support
- self-adhesive

Material: Polycarbonate  
Thickness: 0.7 mm  
Adhesive: Acrylate  
Application area: Inside  
Surface: matt



## Magnetic labels

- adhere to all ferrous substrates
- excellently suited for cold storage rooms
- flexibly applicable

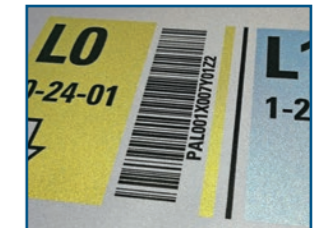
Material: Magnetic tape  
Thickness: 1.0 - 3.0 mm  
Application area: Inside  
Surface: matt  
Laminate: on request



## Reflex - Labels

- widely visible for PDC devices
- retro-reflective surface
- self-adhesive

Material: Reflective foil RA1  
Thickness: 0.7 mm  
Adhesive: Acrylate  
Application area: Inside  
Surface: glossy  
Laminate: on request



## Application examples:

Examples of label designs:

- 4-1: Yellow background, barcode, X4 Y1 Z1
- 4-2: Blue background, barcode, X4 Y1 Z2
- 4-3: Red background, barcode, X4 Y1 Z3
- 4-4: Green background, barcode, X4 Y1 Z4
- Z6-T15-863 351-5: White background, barcode, X4 Y1 Z1
- 1-2 ABC 3-4: Yellow background, barcode
- Reihe 10: Four labels with different colored backgrounds (green, blue, yellow, purple) and barcodes, labeled 10-01-01 to 10-01-07.
- A B C: Three labels with different colored backgrounds (yellow, white, white) and barcodes, labeled 1B324A, 1B324B, 1B324C.
- Bereich 2 AB 89 02-AB-0089: Blue background, QR code, alphanumeric code.
- 8.1.10.1: White background, upward arrow, barcode, alphanumeric code, and another barcode labeled 510498035F.
- Zylinderrollengerät: White background, alphanumeric code, and another alphanumeric code labeled SLF.NU 2212 E.M1.C3.LONGLIFE.

# Operational markings

applied quickly - versatile - durable

For marking of storage areas and shelf spaces.

Do you have any questions regarding the correct storage location marking?  
Give us a call! ☎ +49 36605 99130



## Shelf labels / rack labels

- for marking racks and storage areas
- hanging, self-adhesive or screw-fastening
- made of aluminium composite, rigid foam or PVC

Time is an important factor in warehouse management. With our rigid, large-format signs and angular signs you can guide your employees efficiently through your warehouse. Large barcodes can be scanned directly from the forklift truck and the operator can identify the required storage area from a great distance.

## Bulk storage signs

Bulk storage signs are an excellent alternative to floor marking for heavy pallets and forklifts. The bevelled signs are suspended from the hall ceiling and indicate the respective storage location.

Material: **Hard foam, PVC**  
Thickness: 3 mm  
Application area: Inside  
Dimensions max: 1200 x 1200 mm  
Completely individual design!



## Rack labels / Aisle labels

Mark large-format storage areas, racks or aisles. Rack labels are positioned in your warehouse in a highly visible position and provide a clear overview of the areas.

Material: **Aluminium composite, rigid foam, PVC**  
Thickness: 3 - 10 mm  
Application area: Indoor/outdoor  
Dimensions max: 1300 x 2000 mm (multi-part printing possible)  
Completely individual design!



## Angular signs

Angular signs increase the visibility of the marking in large warehouses, as they can also be read from the side. Different designs and sizes possible.

Material: **PVC**  
Thickness: 1 mm  
Application area: Inside  
Completely individual design!



All signs are manufactured individually according to customer requirements!  
We can provide comprehensive advice! Tel: +49 36605 99130

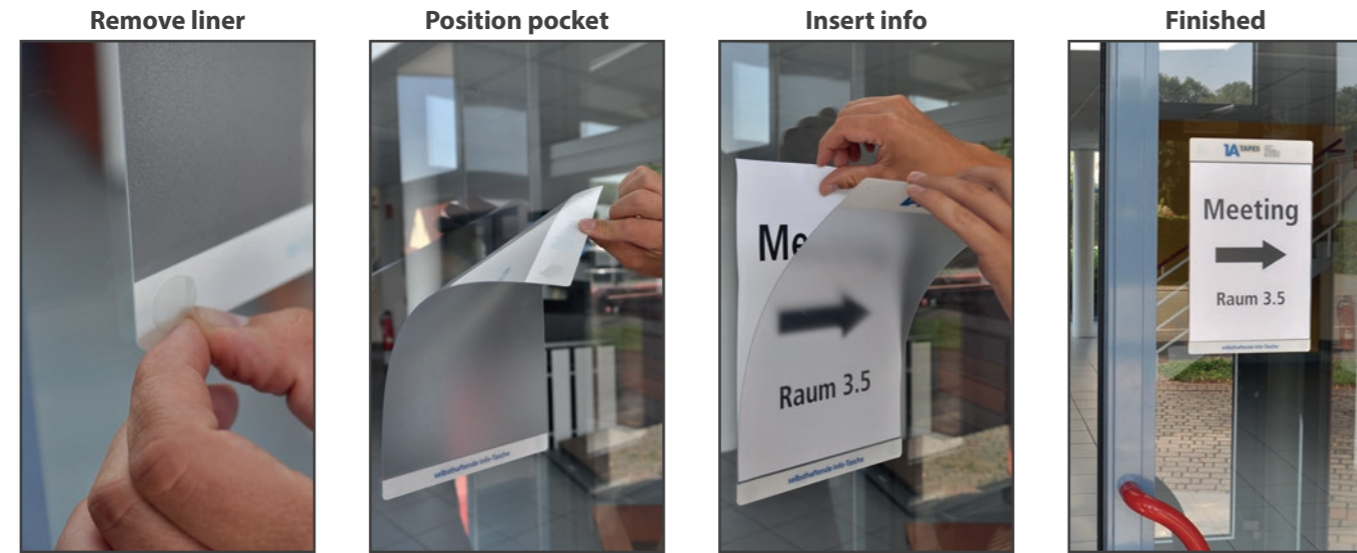
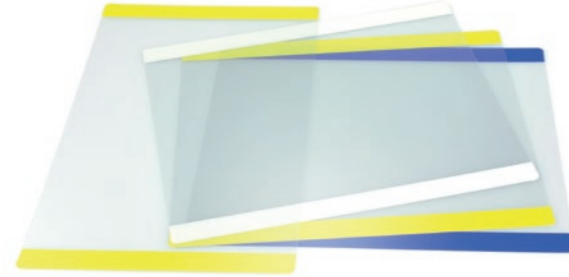
## WT-4618 Self-adhesive info pocket

- quick and easy to attach
- residue-free removable and reusable

The A4 format information pockets adhere to all gap-free and smooth surfaces such as glass, metal, lacquered surfaces, steel, Plexiglas or wall surfaces. They can be removed without leaving any residue and are reusable as often as required. The holding surface can be easily cleaned with water when dirty.

Suitable for attaching employee information such as work instructions, shift and maintenance schedules. As a hanging aid for advertisements and window displays for real estate or in travel agencies.

Material: PVC  
Thickness: 0.5 mm  
Sizes: suitable for DIN A4 portrait or landscape



### Info pocket Standard

Colour	A4 portrait	A4 landscape	VE
yellow	4618.04.0-A4	4618.04.1-A4	2
red	4618.01.0-A4	4618.01.1-A4	2
blue	4618.10.0-A4	4618.10.1-A4	2
green	4618.02.0-A4	4618.02.1-A4	2
white	4618.08.0-A4	4618.08.1-A4	2
light grey	4618.06.0-A4	4618.06.1-A4	2
black	4618.07.0-A4	4618.07.1-A4	2

### Individual with your text or logo on request

## WT-5118 Labelling pockets

- interchangeable labelling
- ideal for frequently changing lettering

Mark your pallet positions directly on the floor. The labelling pockets are self-adhesive and therefore quick to attach. If you change the lettering frequently, we recommend open pockets. Closed pockets are suitable for wet-cleaning surfaces.

Application area: Inside  
Material: PVC  
Thickness: 1.2 mm  
Sizes: see table



Colour	A4 closed 323 mm x 290 mm	A4 open 302 mm x 290 mm	A5 closed 236 mm x 231 mm	A5 open 216 mm x 231 mm	1/2 A4 closed 323 mm x 187 mm	1/2 A4 open 303 mm x 187 mm	1/3 A4 closed 236 mm x 180 mm	1/3 A4 open 216 mm x 180 mm	VE
yellow	5118.04.1-A4	5118.04.0-A4	5118.04.1-A5	5118.04.0-A5	5118.04.2-A4	5118.04.5-A4	5118.04.3-A4	5118.04.4-A4	10
red	5118.01.1-A4	5118.01.0-A4	5118.01.1-A5	5118.01.0-A5	5118.01.2-A4	5118.01.5-A4	5118.01.3-A4	5118.01.4-A4	10
blue	5118.10.1-A4	5118.10.0-A4	5118.10.1-A5	5118.10.0-A5	5118.10.2-A4	5118.10.5-A4	5118.10.3-A4	5118.10.4-A4	10
green	5118.02.1-A4	5118.02.0-A4	5118.02.1-A5	5118.02.0-A5	5118.02.2-A4	5118.02.5-A4	5118.02.3-A4	5118.02.4-A4	10
orange	5118.12.1-A4	5118.12.0-A4	5118.12.1-A5	5118.12.0-A5	5118.12.2-A4	5118.12.5-A4	5118.12.3-A4	5118.12.4-A4	10
white	5118.08.1-A4	5118.08.0-A4	5118.08.1-A5	5118.08.0-A5	5118.08.2-A4	5118.08.5-A4	5118.08.3-A4	5118.08.4-A4	10
light grey	5118.06.1-A4	5118.06.0-A4	5118.06.1-A5	5118.06.0-A5	5118.06.2-A4	5118.06.5-A4	5118.06.3-A4	5118.06.4-A4	10
dark grey	5118.11.1-A4	5118.11.0-A4	5118.11.1-A5	5118.11.0-A5	5118.11.2-A4	5118.11.5-A4	5118.11.3-A4	5118.11.4-A4	10
black	5118.07.1-A4	5118.07.0-A4	5118.07.1-A5	5118.07.0-A5	5118.07.2-A4	5118.07.5-A4	5118.07.3-A4	5118.07.4-A4	10

## Floor marking signs

- for marking warehouse and storage locations
- scratch-resistant and individual print
- self-adhesive

Suitable for warehouse and storage location marking, marking of traffic lanes, working areas, safety areas or storage areas.

Application area: Inside  
Material: Polycarbonate  
Thickness: 0.7 mm  
Sizes: Standard sizes and upon request  
Sample: 11



Colour	100 mm x 120 mm (HxW)	100 mm x 180 mm (HxW)	100 mm x 300 mm (HxW)	150 mm x 200 mm (HxW)	200 mm x 300 mm (HxW)	VE
yellow/black	LB47.CA01.100-120	LB47.CA01.100-180	LB47.CA01.100-300	LB47.CA01.150-200	LB47.CA01.200-300	1
white/black	LB87.CA01.100-120	LB87.CA01.100-180	LB87.CA01.100-300	LB87.CA01.150-200	LB47.CA01.200-300	1
red/white	LB18.CA01.100-120	LB18.CA01.100-180	LB18.CA01.100-300	LB18.CA01.150-200	LB47.CA01.200-300	1

When ordering with a barcode, please indicate which barcode system you are using.





## Spray stencils

- simple marking even on rounded surfaces
- Letters and numbers
- reusable

Spray stencils are used for uniform marking and labelling in warehouses, production or logistics. Using spray paint; letters, numbers or individual stencils can be applied indoors and outdoors, as well as on almost all surfaces and floors.

Material: Plastic white  
 Thickness: 0.2 mm  
 Font: DIN SCHAHLONIER-SCHRIFT (other fonts on request)  
 All-round 50 mm spray mist protection



### Individual spray stencils

We manufacture stencils with your logo, numeric, lettering or pictograms for marking various surfaces. Other materials such as magnetic foil are also available on request.

We would be happy to advise you:

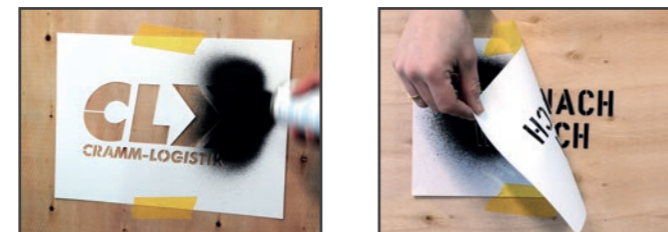
+49 36605 99130

	Character height 50 mm	Character height 100 mm	Character height 200 mm	Piece
A - Z	LSS.PC00.050-AZ	LSS.PC00.100-AZ	LSS.PC00.200-AZ	26
0 - 9	LSS.PC00.050-09	LSS.PC00.100-09	LSS.PC00.200-09	10

A	LSS.PC00.050-A	LSS.PC00.100-A	LSS.PC00.200-A	1
B	LSS.PC00.050-B	LSS.PC00.100-B	LSS.PC00.200-B	1
C	LSS.PC00.050-C	LSS.PC00.100-C	LSS.PC00.200-C	1
D	LSS.PC00.050-D	LSS.PC00.100-D	LSS.PC00.200-D	1
E	LSS.PC00.050-E	LSS.PC00.100-E	LSS.PC00.200-E	1
F	LSS.PC00.050-F	LSS.PC00.100-F	LSS.PC00.200-F	1
G	LSS.PC00.050-G	LSS.PC00.100-G	LSS.PC00.200-G	1
H	LSS.PC00.050-H	LSS.PC00.100-H	LSS.PC00.200-H	1
I	LSS.PC00.050-I	LSS.PC00.100-I	LSS.PC00.200-I	1
J	LSS.PC00.050-J	LSS.PC00.100-J	LSS.PC00.200-J	1
K	LSS.PC00.050-K	LSS.PC00.100-K	LSS.PC00.200-K	1
L	LSS.PC00.050-L	LSS.PC00.100-L	LSS.PC00.200-L	1
M	LSS.PC00.050-M	LSS.PC00.100-M	LSS.PC00.200-M	1
N	LSS.PC00.050-N	LSS.PC00.100-N	LSS.PC00.200-N	1
O	LSS.PC00.050-O	LSS.PC00.100-O	LSS.PC00.200-O	1
P	LSS.PC00.050-P	LSS.PC00.100-P	LSS.PC00.200-P	1
Q	LSS.PC00.050-Q	LSS.PC00.100-Q	LSS.PC00.200-Q	1
R	LSS.PC00.050-R	LSS.PC00.100-R	LSS.PC00.200-R	1
S	LSS.PC00.050-S	LSS.PC00.100-S	LSS.PC00.200-S	1
T	LSS.PC00.050-T	LSS.PC00.100-T	LSS.PC00.200-T	1
U	LSS.PC00.050-U	LSS.PC00.100-U	LSS.PC00.200-U	1
V	LSS.PC00.050-V	LSS.PC00.100-V	LSS.PC00.200-V	1
W	LSS.PC00.050-W	LSS.PC00.100-W	LSS.PC00.200-W	1
X	LSS.PC00.050-X	LSS.PC00.100-X	LSS.PC00.200-X	1
Y	LSS.PC00.050-Y	LSS.PC00.100-Y	LSS.PC00.200-Y	1
Z	LSS.PC00.050-Z	LSS.PC00.100-Z	LSS.PC00.200-Z	1

0	LSS.PC00.050-0	LSS.PC00.100-0	LSS.PC00.200-0	1
1	LSS.PC00.050-1	LSS.PC00.100-1	LSS.PC00.200-1	1
2	LSS.PC00.050-2	LSS.PC00.100-2	LSS.PC00.200-2	1
3	LSS.PC00.050-3	LSS.PC00.100-3	LSS.PC00.200-3	1
4	LSS.PC00.050-4	LSS.PC00.100-4	LSS.PC00.200-4	1
5	LSS.PC00.050-5	LSS.PC00.100-5	LSS.PC00.200-5	1
6	LSS.PC00.050-6	LSS.PC00.100-6	LSS.PC00.200-6	1
7	LSS.PC00.050-7	LSS.PC00.100-7	LSS.PC00.200-7	1
8	LSS.PC00.050-8	LSS.PC00.100-8	LSS.PC00.200-8	1
9	LSS.PC00.050-9	LSS.PC00.100-9	LSS.PC00.200-9	1

Ä	LSS.PC00.050-S1	LSS.PC00.100-S1	LSS.PC00.200-S1	1
Ö	LSS.PC00.050-S2	LSS.PC00.100-S2	LSS.PC00.200-S2	1
Ü	LSS.PC00.050-S3	LSS.PC00.100-S3	LSS.PC00.200-S3	1
:	LSS.PC00.050-S4	LSS.PC00.100-S4	LSS.PC00.200-S4	1
-	LSS.PC00.050-S5	LSS.PC00.100-S5	LSS.PC00.200-S5	1
/	LSS.PC00.050-S6	LSS.PC00.100-S6	LSS.PC00.200-S6	1
&	LSS.PC00.050-S7	LSS.PC00.100-S7	LSS.PC00.200-S7	1



### Accessories

#### Fine crepe tape

Suitable for fixing spray stencils. After marking easily removable.



Crepe tape	Item number
25 mm x 50 m	5361.50.025

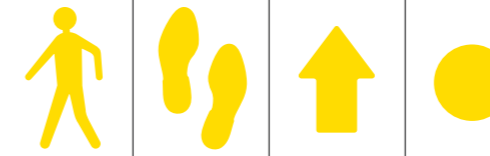
## WT-5811 Pictograms with slip resistance

- retro reflective and anti-slip R11 (DIN 51130)
- suitable for outdoor use
- suitable for concrete paving and asphalt

For marking pavements, working areas and safety areas. Suitable for asphalt and concrete pavement indoors and outdoors. Quick to apply and extremely wear resistant. Quick and easy to apply and extremely wear resistant.

Application area: Indoor and outdoor  
 Material: PU  
 Thickness: 1.6 mm  
 Sample: 03

	Pedestrians 600 mm x 330 mm	Foot print 297 mm x 110 mm	Arrow 145 mm x 90 mm	Round Ø 75 mm
--	-----------------------------	----------------------------	----------------------	---------------



Colour	VE	1 piece	5 pair	10 piece	10 piece
white		5811.08.101	5811.08.121	5811.08.131	5811.08.R075
yellow		5811.04.101	5811.04.121	5811.04.131	5811.04.R075



#### Primer Nr.5

Primer No.5 required for outdoor use! Primer No.5 significantly increases the adhesive strength of an adhesive tape on critical surfaces.

#### Primer Nr.5

250 ml (0,75m²)	3051.25.250
1000 ml (3m²)	3051.25.1000

## WT-6128 Pictograms

- suitable for smooth surfaces indoors
- with slip resistance R9 (DIN 51130)

For marking walkways, work areas and safe areas. Can be quickly glued on and removed without leaving any residue.

Application area: Inside  
 Material: PVC  
 Thickness: 0.3 mm  
 Sample: 16

	Pedestrians 600 mm x 330 mm	Foot print 297 mm x 110 mm	Arrow 145 mm x 90 mm	Round Ø 75 mm
--	-----------------------------	----------------------------	----------------------	---------------



Colour	VE	1 piece	5 pair	10 piece	10 piece
white		6128.08.B101	6128.08.B121	6128.08.B131	6128.08.R075
yellow		6128.04.B101	6128.04.B121	6128.04.B131	6128.04.R075
red		6128.01.B101	6128.01.B121	6128.01.B131	6128.01.R075
blue		6128.10.B101	6128.10.B121	6128.10.B131	6128.10.R075
green		6128.02.B101	6128.02.B121	6128.02.B131	6128.02.R075



Other colours and shapes available on request!

# WT-5210 | 7110 | 5110 | 5610 Storage location marker

## for marking pallet storage locations

For self-adhesive marking of storage locations, storage areas or work areas.

Material: Polyester (suitable for WT-5229)  
 Floor: for smooth and gap-free surfaces  
 Thickness: 0.2 mm  
 Application area: Inside  
 Sample: (05)

Material: PVC (suitable for WT-5125)  
 Floor: for smooth and gap-free surfaces  
 Thickness: 0.5 mm  
 Application area: Inside  
 Sample: (07)

Material: Polycarbonate  
 Floor: for smooth and gap-free surfaces  
 Thickness: 0.7 mm  
 Application area: Inside  
 Sample: (11)

Material: coated aluminium (WT-5645)  
 Floor: for rough and granulated surfaces  
 Thickness: 0.6 mm  
 Application area: Indoor/outdoor  
 Sample: (06)



L-piece	Polyester – WT-5210		Polycarbonate – WT-7110		PVC – WT-5110		Soft aluminium – WT-5610	
	50 mm	75 mm	50 mm	75 mm	50 mm	75 mm	50 mm	75 mm
yellow	5210.04.060	5210.04.063	7110.04.060	7110.04.063	5110.04.060	5110.04.063	5610.04.060	5610.04.063
red	5210.01.060	5210.01.063	7110.01.060	7110.01.063	5110.01.060	5110.01.063	---	---
blue	5210.10.060	5210.10.063	7110.10.060	7110.10.063	5110.10.060	5110.10.063	---	---
green	5210.02.060	5210.02.063	7110.02.060	7110.02.063	5110.02.060	5110.02.063	---	---
white	5210.08.060	5210.08.063	7110.08.060	7110.08.063	5110.08.060	5110.08.063	5610.08.060	5610.08.063
yellow/black	5210.17.060	5210.17.063	7110.17.060	7110.17.063	---	---	---	---

25 pieces per VE

T-piece	Polyester – WT-5210		Polycarbonate – WT-7110		PVC – WT-5110		Soft aluminium – WT-5610	
	50 mm	75 mm	50 mm	75 mm	50 mm	75 mm	50 mm	75 mm
yellow	5210.04.061	5210.04.065	7110.04.061	7110.04.065	5110.04.061	5110.04.065	5610.04.061	5610.04.065
red	5210.01.061	5210.01.065	7110.01.061	7110.01.065	5110.01.061	5110.01.065	---	---
blue	5210.10.061	5210.10.065	7110.10.061	7110.10.065	5110.10.061	5110.10.065	---	---
green	5210.02.061	5210.02.065	7110.02.061	7110.02.065	5110.02.061	5110.02.065	---	---
white	5210.08.061	5210.08.065	7110.08.061	7110.08.065	5110.08.061	5110.08.065	5610.08.061	5610.08.065
yellow/black	5210.17.061	5210.17.065	7110.17.061	7110.17.065	---	---	---	---

25 pieces per VE

X-piece	Polyester – WT-5210		Polycarbonate – WT-7110		PVC – WT-5110		Soft aluminium – WT-5610	
	50 mm	75 mm	50 mm	75 mm	50 mm	75 mm	50 mm	75 mm
yellow	5210.04.062	5210.04.064	7110.04.062	7110.04.064	5110.04.062	5110.04.064	5610.04.062	5610.04.064
red	5210.01.062	5210.01.064	7110.01.062	7110.01.064	5110.01.062	5110.01.064	---	---
blue	5210.10.062	5210.10.064	7110.10.062	7110.10.064	5110.10.062	5110.10.064	---	---
green	5210.02.062	5210.02.064	7110.02.062	7110.02.064	5110.02.062	5110.02.064	---	---
white	5210.08.062	5210.08.064	7110.08.062	7110.08.064	5110.08.062	5110.08.064	5610.08.062	5610.08.064
yellow/black	5210.17.062	5210.17.064	7110.17.062	7110.17.064	---	---	---	---

25 pieces per VE

longitudinal	Polyester – WT-5210		Polycarbonate – WT-7110		PVC – WT-5110		Soft aluminium – WT-5610	
	50 mm	75 mm	50 mm	75 mm	50 mm	75 mm	50 mm	75 mm
yellow	5210.04.071	5210.04.073	7110.04.071	7110.04.073	5110.04.071	5110.04.073	5610.04.071	5610.04.073
red	5210.01.071	5210.01.073	7110.01.071	7110.01.073	5110.01.071	5110.01.073	---	---
blue	5210.10.071	5210.10.073	7110.10.071	7110.10.073	5110.10.071	5110.10.073	---	---
green	5210.02.071	5210.02.073	7110.02.071	7110.02.073	5110.02.071	5110.02.073	---	---
white	5210.08.071	5210.08.073	7110.08.071	7110.08.073	5110.08.071	5110.08.073	5610.08.071	5610.08.073
yellow/black	5210.17.071	5210.17.073	7110.17.071	7110.17.073	---	---	---	---

25 pieces per VE

Round	Polyester – WT-5210		Polycarbonate – WT-7110		PVC – WT-5110		Soft aluminium – WT-5610	
	50 mm	75 mm	50 mm	75 mm	50 mm	75 mm	50 mm	75 mm
yellow	5210.04.069	5210.04.070	7110.04.069	7110.04.070	5110.04.069	5110.04.070	5610.04.069	5610.04.070
red	5210.01.069	5210.01.070	7110.01.069	7110.01.070	5110.01.069	5110.01.070	---	---
blue	5210.10.069	5210.10.070	7110.10.069	7110.10.070	5110.10.069	5110.10.070	---	---
green	5210.02.069	5210.02.070	7110.02.069	7110.02.070	5110.02.069	5110.02.070	---	---
white	5210.08.069	5210.08.070	7110.08.069	7110.08.070	5110.08.069	5110.08.070	5610.08.069	5610.08.070
yellow/black	5210.17.069	5210.17.070	7110.17.069	7110.17.070	---	---	---	---

25 pieces per VE

Other colours and shapes available on request!

# WT-5210 | 7110 Printed storage location markers

- printed individually according to your requirements
- Marking of pallet positions
- scratch-resistant print image

For the self-adhesive marking of storage locations, storage areas or work areas that must be marked by means of numbering or labelling. For a smooth and gap-free underground.

Material: Polyester (suitable for WT-5229)  
 Thickness: 0.2 mm  
 Application area: Inside  
 Sample: (05)

Material: Polycarbonate  
 Thickness: 0.7 mm  
 Application area: Inside  
 Sample: (11)

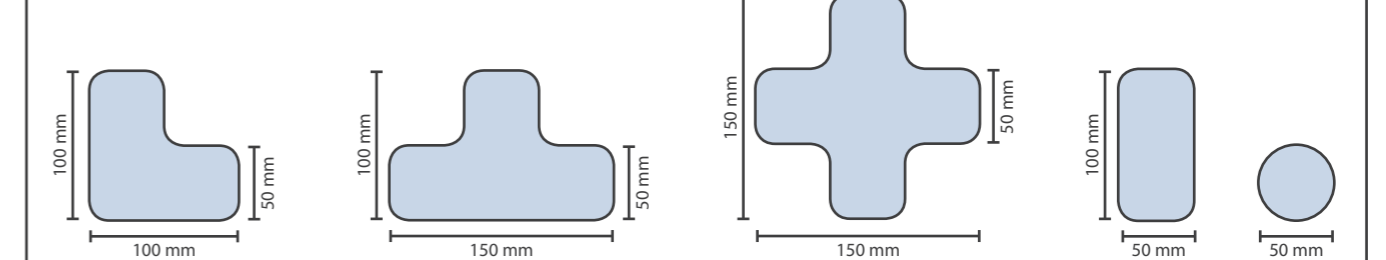


Colour	VE	Polyester – WT-5210				Polycarbonate – WT-7110			
		L-piece 50 mm	L-piece 75 mm	T-piece 50 mm	T-piece 75 mm	L-piece 50 mm	L-piece 75 mm	T-piece 50 mm	T-piece 75 mm
		Print area 90 x 40 mm	Print area 115 x 65 mm	Print area 140 x 40 mm	Print area 165 x 65 mm	Print area 90 x 40 mm	Print area 115 x 65 mm	Print area 140 x 40 mm	Print area 165 x 65 mm
yellow	VE	10 piece	10 piece	10 piece	10 piece	10 piece	10 piece	10 piece	10 piece
red	VE	5210.04.B60	5210.04.B63	5210.04.B61	5210.04.B65	7110.04.B60	7110.04.B63	7110.04.B61	7110.04.B65
blue	VE	5210.01.B60	5210.01.B63	5210.01.B61	5210.01.B65	7110.01.B60	7110.01.B63	7110.01.B61	7110.01.B65
green	VE	5210.10.B60	5210.10.B63	5210.10.B61	5210.10.B65	7110.10.B60	7110.10.B63	7110.10.B61	7110.10.B65
white	VE	5210.02.B60	5210.02.B63	5210.02.B61	5210.02.B65	7110.02.B60	7110.02.B63	7110.02.B61	7110.02.B65
black	VE	5210.08.B60	5210.08.B63	5210.08.B61	5210.08.B65	7110.08.B60	7110.08.B63	7110.08.B61	7110.08.B65
		5210.07.B60	5210.07.B63	5210.07.B61	5210.07.B65	7110.07.B60	7110.07.B63	7110.07.B61	7110.07.B65

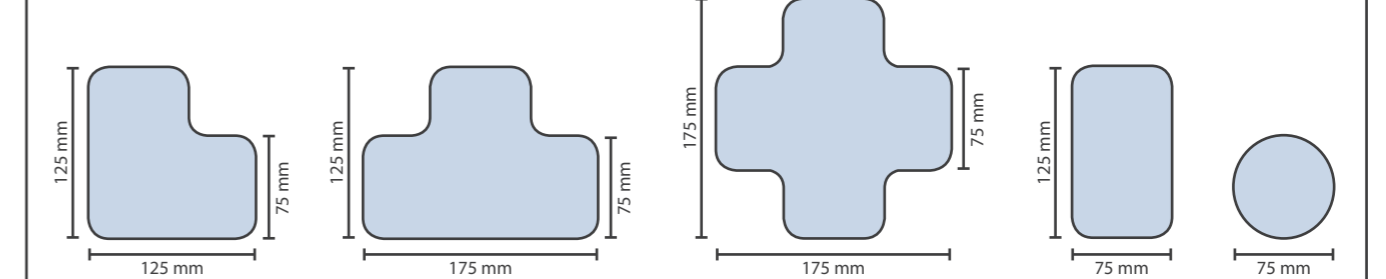
When ordering with a barcode, please indicate which barcode system you are using.

## Dimension of storage location marker 50 mm and 75 mm

### Side width 50 mm



### Side width 75 mm



# Escape signs

In accordance with ASR A1.3 and 2.3, escape routes must be equipped with long photoluminescent escape signs and fire protection signs if no emergency lighting is available. Make sure you provide proper signage, as correct signing can save lives.

## Material overview:

**Foils:** 0.1 mm thick | self-adhesive | for smooth and gap-free surfaces

**Aluminium composite:** 2.0 mm thick | for wall mounting indoors and outdoors | with self-adhesive or screw-in accessories

**Plastic:** 1.0 mm thick | for wall mounting indoors | with self-adhesive or screw-in accessories

**Film photoluminescent:** 0.7 mm thick | self-adhesive | for smooth and gap-free surfaces

**Aluminium composite photoluminescent:** 2.0 - 3.0 mm thick | for wall mounting indoors and outdoors | with self-adhesive or screw-in accessories

**Plastic photoluminescent:** 1.7 mm thick | for wall mounting indoors | with self-adhesive or screw-in accessories



Escape route straight ahead (ASR A1.3)  
Motif number | SR40



Escape route downward (ASR A1.3)  
Motif number | SR43



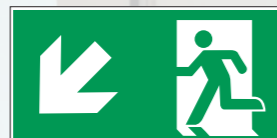
Escape route left (ASR A1.3)  
Motif number | SR41



Escape route right (ASR A1.3)  
Motif number | SR44



Escape route left upwards (ASR A1.3)  
Motif number | SR42



Escape route left downwards (ASR A1.3)  
Motif number | SR45



Escape route right upwards (ASR A1.3)  
Motif number | SR47



Escape route right downwards (ASR A1.3)  
Motif number | SR46

Include the motif number with the item number for the appropriate material: **SR40.FAB99.074** (example for „Escape route straight ahead“ - foil 150x300 mm)

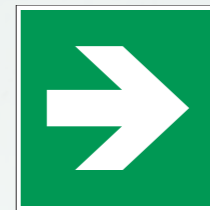
Material	HxW / mm	Item number	VE	Material	HxW / mm	Item number	VE	Material	HxW / mm	Item number	VE
Foil	150x300	...FAB99.150	1	Aluminium composite 2 mm	150 x 300	...DA90.150	1	Plastic 1 mm	150 x 300	...PE00.150	1
	200 x 400	...FAB99.200	1		200 x 400	...DA90.200	1		200 x 400	...PE00.200	1
Foil photoluminescent	150 x 300	...FN81.150	1	Aluminium composite 2 mm photoluminescent	150 x 300	...DAN80.150	1	Plastic 1 mm photoluminescent	150 x 300	...PEN90.150	1
	200 x 400	...FN81.200	1		200 x 400	...DAN80.200	1		200 x 400	...PEN90.200	1



Escape route left (ASR A1.3)  
Motif number | SR01



Escape route right (ASR A1.3)  
Motif number | SR02



Direction indication - only in conjunction with another escape sign (ASR A1.3)  
Motif number | SR03



Direction indication - only in conjunction with another escape sign (ASR A1.3)  
Motif number | SR06



Assembly point (ASR A1.3)  
Motif number | SR08



Open with left turn (ASR A1.3)  
Motif number | SR04



Open with right turn (ASR A1.3)  
Motif number | SR05



First aid (ASR A1.3)  
Motif number | SR07



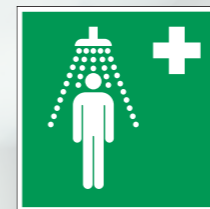
Emergency telephone (ASR A1.3)  
Motif number | SR10



Stretcher (ASR A1.3)  
Motif number | SR11



Eye wash equipment (ASR A1.3)  
Motif number | SR14



Emergency shower (ASR A1.3)  
Motif number | SR13



Escape exit (ASR A1.3)  
Motif number | SR18



Emergency exit with fire service ladder (ASR A1.3)  
Motif number | SR16



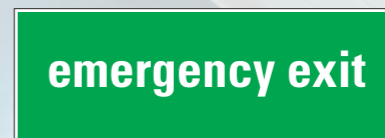
Emergency exit (ASR A1.3)  
Motif number | SR17

Include the motif number with the item number for the appropriate material: **SR01.FAB99.100** (Example for „Escape route left“ - foil 100mm)

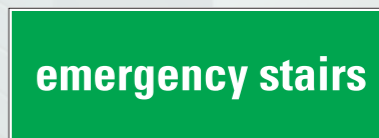
Material	HxW / mm	Item number	VE	Material	HxW / mm	Item number	VE	Material	HxW / mm	Item number	VE
Foil	100 x 100	...FAB99.100	1	Foil photoluminescent	100 x 100	...FN81.100	1	Angular signs	150 x 150	...PEG00.150-150	1
	150 x 150	...FAB99.150	1		150 x 150	...FN81.150	1		200 x 200	...PEG00.200-200	1
	200 x 200	...FAB99.200	1		200 x 200	...FN81.200	1		Angular signs photoluminescent	150 x 150	...PENG00.150-150
Aluminium composite 2 mm	100 x 100	...DA90.100	1	Aluminium composite 2 mm photoluminescent	100 x 100	...DAN80.100	1	Protruding signs	150 x 150	...PEH00.150-150	1
	150 x 150	...DA90.150	1		150 x 150	...DAN80.150	1		200 x 200	...PENG00.200-200	1
	200 x 200	...DA90.200	1		200 x 200	...DAN80.200	1		Protruding signs photoluminescent	150 x 150	...PENH00.150-150
Plastic 1 mm	100 x 100	...PE00.100	1	Plastic 1 mm photoluminescent	100 x 100	...PEN90.100	1	Angular and protruding signs made of plastic 1 mm	200 x 200	...PENH00.200-200	1
	150 x 150	...PE00.150	1		150 x 150	...PEN90.150	1				
	200 x 200	...PE00.200	1		200 x 200	...PEN90.200	1				



Exit (tried in practice)  
Motif number | SR19



Emergency exit (tried in practice)  
Motif number | SR20



Emergency ladder (tried in practice)  
Motif number | SR21

Include the motif number with the item number for the appropriate material: **SR19.FAB99.074** (example for „Exit“ - foil 74 x 210 mm)

Material	HxW / mm	Item number	VE	Material	HxW / mm	Item number	VE	Material	HxW / mm	Item number	VE
Foil	105 x 300	...FAB99.105	1	Aluminium composite 2 mm	105 x 300	...DA90.105	1	Plastic 1 mm	105 x 300	...PE00.105	1
	140 x 400	...FAB99.140	1		140 x 400	...DA90.140	1		140 x 400	...PE00.140	1
Foil photoluminescent	105 x 300	...FN81.105	1	Aluminium composite 2 mm photoluminescent	105 x 300	...DAN80.105	1	Plastic 1 mm photoluminescent	105 x 300	...PEN90.105	1
	140 x 400	...FN81.140	1		140 x 400	...DAN80.140	1		140 x 400	...PEN90.140	1

# Fire safety signs

Increase safety in your company and enable fast and targeted action in the event of a fire by means of fire safety signs standardized and internationally understood according to DIN EN ISO 7010 and ASR A1.3.

## Material overview:

**Foils:** 0.1 mm thick | self-adhesive | for smooth and gap-free surfaces

**Aluminium composite:** 2.0 mm thick | for wall mounting indoors and outdoors | with self-adhesive or screw-in accessories

**Plastic:** 1.0 mm thick | for wall mounting indoors | with self-adhesive or screw-in accessories

**Film photoluminescent:** 0.7 mm thick | self-adhesive | for smooth and gap-free surfaces

**Aluminium composite photoluminescent:** 2.0 - 3.0 mm thick | for wall mounting indoors and outdoors | with self-adhesive or screw-in accessories

**Plastic photoluminescent:** 1.7 mm thick | for wall mounting indoors | with self-adhesive or screw-in accessories



Fire extinguisher (ASR A1.3)	Fire alarm (ASR A1.3)	Fire alarm telephone (ASR A1.3)	Fire hose (ASR A1.3)
Motif number   SB01	Motif number   SB02	Motif number   SB03	Motif number   SB04
Means and equipment for fire fighting (ASR A1.3)	Fire ladder (ASR A1.3)	Direction indication - only in conjunction with other fire safety signs (ASR A1.3)	Direction indication only in conjunction with a fire safety sign (ASR A1.3)
Motif number   SB05	Motif number   SB06	Motif number   SB08	Motif number   SB07

**Angular and protruding signs** protrude into the room space and increase the safety within your company.

Angular sign

Protruding sign

Include the motif number with the item number for the appropriate material: **SB01.FAB99.100** (example for "Fire extinguisher" - foil 100mm)

Material	HxW / mm	Item number	VE	Material	HxW / mm	Item number	VE	Material	HxW / mm	Item number	VE	
Foil	100 x 100	...FAB99.100	1	Foil photoluminescent	100 x 100	...FN81.100	1	Angular signs	150 x 150	...PEG00.150-150	1	
	150 x 150	...FAB99.150	1		150 x 150	...FN81.150	1		200 x 200	...PEG00.200-200	1	
	200 x 200	...FAB99.200	1		200 x 200	...FN81.200	1		150 x 150	...PENG00.150-150	1	
Aluminium composite 2 mm	100 x 100	...DA90.100	1	Aluminium composite 2 mm photoluminescent	100 x 100	...DAN80.100	1	Angular signs photoluminescent	200 x 200	...PENG00.200-200	1	
	150 x 150	...DA90.150	1		150 x 150	...DAN80.150	1		Protruding signs	150 x 150	...PEH00.150-150	1
	200 x 200	...DA90.200	1		200 x 200	...DAN80.200	1			200 x 200	...PEH00.200-200	1
Plastic 1 mm	100 x 100	...PE00.100	1	Plastic 1 mm photoluminescent	100 x 100	...PEN90.100	1	Protruding signs photoluminescent	150 x 150	...PENH00.150-150	1	
	150 x 150	...PE00.150	1		150 x 150	...PEN90.150	1		200 x 200	...PENH00.200-200	1	
	200 x 200	...PE00.200	1		200 x 200	...PEN90.200	1		Angular and protruding signs made of plastic 1 mm			

## Accessories

### Screw set

For wall mounting of signs, consisting of:  
Screws (4x35mm)  
Cover  
Dowels



Screw set	Item number
Set of 4	8008.00.105

### Adhesive pads

For the self-adhesive attachment signs to suitable surfaces.



Adhesive pads	Item number
Set of 4	8008.00.106
Set of 8	8008.00.107

Fire protection door (ASR A1.3)	Fire resistant door (ASR A1.3)	FACP (ASR A1.3)
Motif number   SB40	Motif number   SB42	Motif number   SB45
Fire protection door (ASR A1.3)	Do not use lift in case of fire (ASR A1.3)	FACP direction (ASR A1.3)
Motif number   SB41	Motif number   SB44	Motif number   SB46

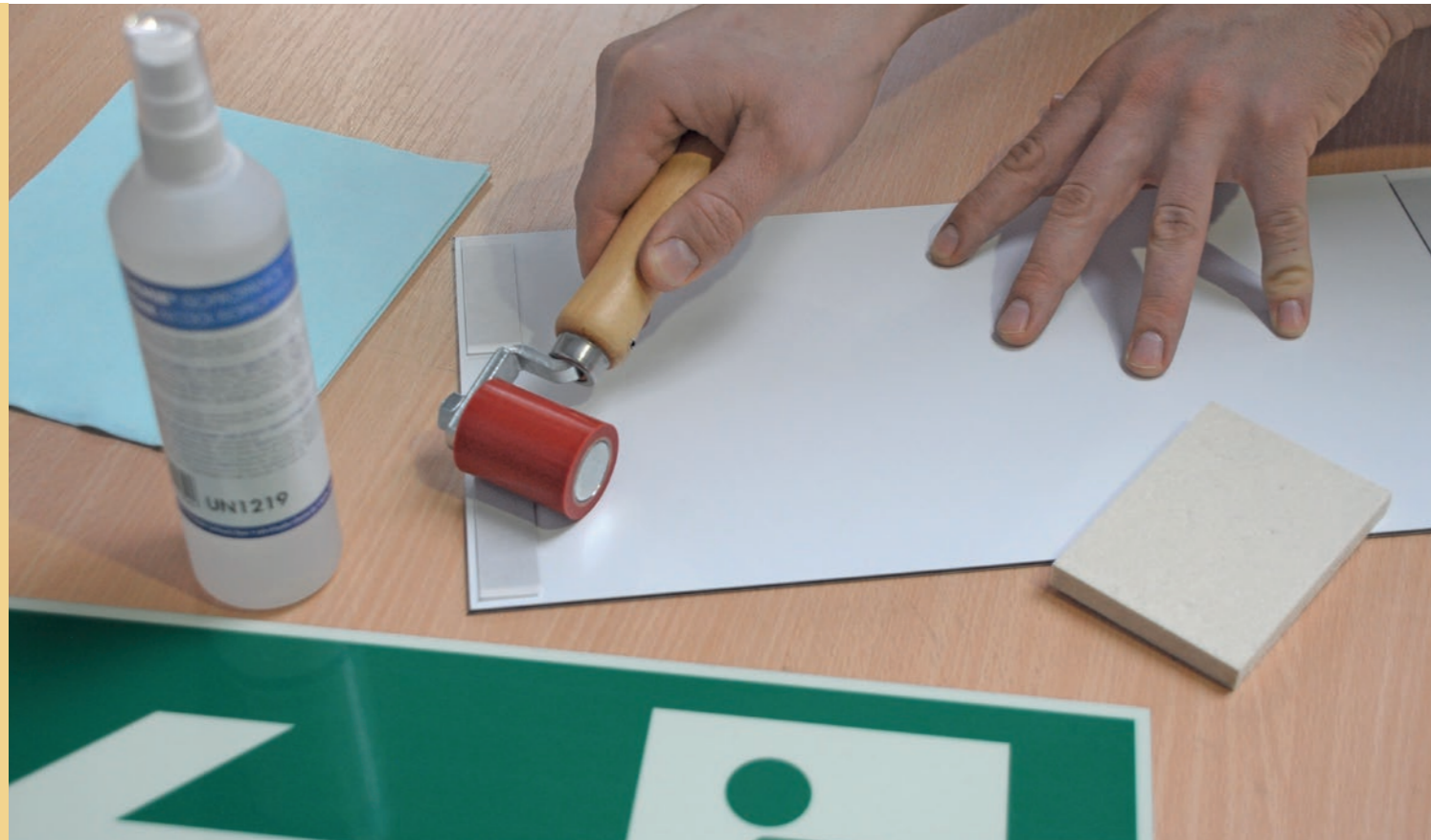
Include the motif number with the item number for the appropriate material: **SB40.FAB99.074** (example for "Fire protection door" - foil 74 x 210 mm)

Material	HxW / mm	Item number	VE	Material	HxW / mm	Item number	VE	Material	HxW / mm	Item number	VE
Foil	74 x 210	...FAB99.074	1	Aluminium composite 2 mm	74 x 210	...DA90.074	1	Plastic 1 mm	74 x 210	...PE00.074	1
	105 x 297	...FAB99.105	1		105 x 297	...DA90.105	1		105 x 297	...PE00.105	1
	148 x 420	...FAB99.148	1		148 x 420	...DA90.148	1		148 x 420	...PE00.148	1
Foil photoluminescent	74 x 210	...FN81.074	1	Aluminium composite 2 mm photoluminescent	74 x 210	...DAN80.074	1	Plastic 1 mm photoluminescent	74 x 210	...PEN90.074	1
	105 x 297	...FN81.105	1		105 x 297	...DAN80.105	1		105 x 297	...PEN90.105	1
	148 x 420	...FN81.148	1		148 x 420	...DAN80.148	1		148 x 420	...PEN90.148	1

# Accessories and attachment

Useful aids for cleaning surfaces and fitting floor marking tapes, labels, foils, stickers and signs.

**Do you have any questions about accessories or attachment aids?  
Give us a call! ☎ +49 036605 99130**



## Cleaner - Isopropanol

For gentle and thorough cleaning. Degreasing of the surfaces to be bonded. Sustainably increases the adhesive strength.

Content:  
Isopropyl 70%  
250 ml



Screw set	Item number
Isopropyl	9104.SW.1745

## Masking tape

Suitable for fixing self-adhesive films. Flat crepe tape can be removed without leaving any residue after gluing.

Material: Crepe paper  
Thickness: 0.12 mm  
Adhesive: Natural rubber



Width x length	Item number
19 mm x 50 m	5361.50.019
25 mm x 50 m	5361.50.025
38 mm x 50 m	5361.50.038
50 mm x 50 m	5361.50.050

## Acrylic foam tape

Double-sided adhesive tape for gluing signs. Perfectly suitable for transparent, "invisible" and permanent gluing on glass, acrylic glass, stainless steel, plastic etc., as well as banner tape.

Material: Pure acrylic foam  
Colour: highly transparent  
Thickness: 1.00 mm  
Adhesive: Acrylate  
Adhesion: 30 N/25mm

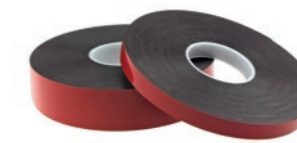


Width x length	12 mm x 11 m	19 mm x 11 m	25 mm x 11 m
Item number	4403.11.012	4403.11.019	4403.11.025

## PE foam tape

Double-sided adhesive tape for fastening and mounting of lightweight signs, mirrors, battens, panels and hangers on smooth surfaces such as metal, plastic or glass indoors and outdoors.

Material: PE foam  
Colour: black  
Thickness: 0.95 mm  
Adhesive: Acrylate  
Adhesion: 22 N/25mm

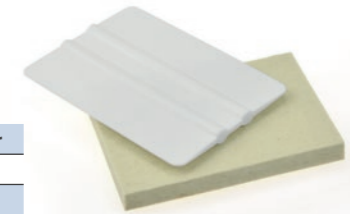


Width x length	12 mm x 10 m	19 mm x 10 m	25 mm x 10 m
Item number	4533.10.012	4533.10.019	4533.10.025

## Wiper

Plastic wipers are suitable for clean and easy bonding of markings and stickers. Felt wipers are ideal for bubble-free application of self-adhesive and sensitive films.

Colour: white / cream  
Material: Plastic / felt  
Dimensions:  
approx. 70 x 100 mm

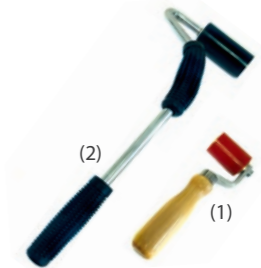


Wiper	Item number
Plastic wiper	8000.01.022/1
Felt wiper	8000.01.025

## Pressure roller

Profi pressure roller for laying self-adhesive floor markings or floor signs on profiled surfaces. For bubble-free pressing of foils, labels or stickers.

Short version: Silicone roller  
45 mm width  
Long version: Rubber roller  
75 mm width



Pressure roller	Item number
Short version (1)	8002.11.031
Long version (2)	8002.00.921

## Cloth tape

Universally applicable cloth adhesive tape for bundling, marking, reinforcing, fixing, sealing, protecting double glazing edges, sandblasting and much more.

Material: Fabric matt  
Colour: grey  
Thickness: 0.28 mm  
Adhesive: Natural rubber



Width x length	19 mm x 50 m	38 mm x 50 m	50 mm x 50 m
Item number	5564.50.019	5564.50.038	5564.50.050

## Screw set

For secure and fixed attachment of signs to suitable walls.

Scope of delivery:  
4x screws 4x35mm  
4x cover  
4x dowels 6mm

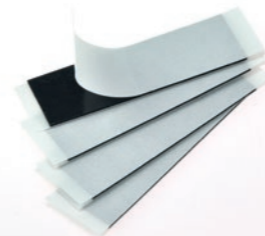


Screw set	Item number
Set of 4	8008.00.105

## Adhesive pads

For self-adhesive attachment of lightweight signs made of aluminium composite, plastic or rigid foam to smooth and gap-free surfaces.

Application area: Inside  
Material: PE foam  
Adhesive: Acrylate  
Thickness: 0.80 - 1.10 mm  
Size: 20 mm x 50 mm



Adhesive pads	Item number
Set of 4	8008.00.106
Set of 8	8008.00.107

## PE foam tape

Double-sided adhesive tape for fastening and mounting of lightweight signs, mirrors, battens, panels and hangers on smooth surfaces such as metal, plastic or glass indoors and outdoors.

Material: PE foam  
Colour: white  
Thickness: 1.10 mm  
Adhesive: Acrylate  
Adhesion: 25 N/25mm



Width x length	12 mm x 10 m	19 mm x 10 m	25 mm x 10 m
Item number	4524.10.012	4524.10.019	4524.10.025

# Prohibitory signs

Prohibition signs forbid conduct that could lead to danger. Provide for greater safety. Mark prohibitions in your company premises in a clearly visible way to prevent accidents at work and material damage. Our prohibition signs comply with the currently valid DIN EN ISO 7010 and ASR A1.3.

## Material overview:

**Foils:** 0.1 mm thick | self-adhesive | for smooth and gap-free surfaces

**Aluminium composite:** 2.0 mm thick | for wall mounting indoors and outdoors | with self-adhesive or screw-in accessories

**Hard foam:** 4.0 mm thick | for wall mounting indoors | with self-adhesive or screw-in accessories

**Plastic:** 1.0 mm thick | for wall mounting indoors | with self-adhesive or screw-in accessories

**Polycarbonate:** 0.7 mm thick | self-adhesive | for various floors in industrial internal areas | sample: (11)

**Anti-slip:** 1.0 mm thick | self-adhesive | anti-slip surface | for various indoor floors | sample: (09)

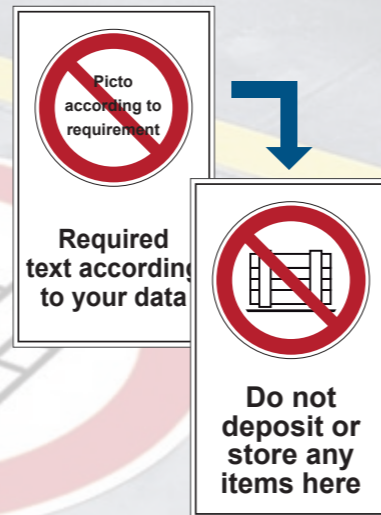
**PVC outdoor:** 1.0 mm thick | self-adhesive | for outdoor floors, concrete paving and asphalt | sample: (09)

## Individual combination signs

Include the motif number with the item number for the appropriate material and your required text:

**SVK02.DA90.300**

**Text: Do not deposit or store any items here**  
(example for SV02 "Deposit or store strictly forbidden" - aluminium composite 300 x 200mm)



Material	HxW / mm	Item number	Piece
Foil	150 x 100	_K__FAB99.150	1
	300 x 200	_K__FAB99.300	1
	450 x 300	_K__FAB99.450	1
Alu composite 2mm	300 x 200	_K__DA90.300	1
	450 x 300	_K__DA90.450	1
	600 x 400	_K__DA90.600	1
	750 x 500	_K__DA90.750	1

Material	HxW / mm	Item number	Piece
Plastic 1mm	150 x 100	_K__PE00.150	1
	300 x 200	_K__PE00.300	1
	450 x 300	_K__PE00.450	1
Hard foam 4mm	300 x 200	_K__SA00.300	1
	450 x 300	_K__SA00.450	1
	600 x 400	_K__SA00.600	1
	750 x 500	_K__SA00.750	1

## Accessories

### Screw set

For wall mounting of signs, consisting of:  
Screws (4x35mm)  
Cover  
Dowels



Screw set	Item number
Set of 4	8008.00.105

### Adhesive pads

For the self-adhesive attachment signs to suitable surfaces.



Adhesive pads	Item number
Set of 4	8008.00.106
Set of 8	8008.00.107

Prohibited for forklift trucks (ASR A1.3) Motif number   SV01	Deposit or storage of items strictly forbidden (ASR A1.3) Motif number   SV02	Depositing pallets strictly forbidden (tried in practice) Motif number   SV28	No pedestrians allowed (ASR A1.3) Motif number   SV03	Access for unauthorised persons prohibited (ASR A1.3) Motif number   SV06
No smoking (ASR A1.3) Motif number   SV04	No naked flame; fire, open source of ignition and no smoking (ASR A1.3) Motif number   SV05	Extinguishing with water prohibited (ASR A1.3) Motif number   SV13	Passenger transport prohibited (ASR A1.3) Motif number   SV25	Do not use lift in case of fire (ASR A1.3) Motif number   SV32
Food and drink prohibited (ASR A1.3) Motif number   SV23	Not drinking water (ASR A1.3) Motif number   SV22	Spraying with water prohibited (ASR A1.3) Motif number   SV21	Access prohibited (ASR A1.3) Motif number   SV14	Use of gloves prohibited (ASR A1.3) Motif number   SV07
Mobile phones must be turned off (ASR A1.3) Motif number   SV20	Non-heavy load (ASR A1.3) Motif number   SV10	Switching prohibited (ASR A1.3) Motif number   SV12	Do not climb (tried in practice) Motif number   SV16	Do not climb (ASR A1.3) Motif number   SV11
No access for persons with pacemakers or implants. Defibrillators (ASR A1.3) Motif number   SV26	Prohibited for persons with metal implants (ASR A1.3) Motif number   SV27	Do not reach inside (ASR A1.3) Motif number   SV08	Do not touch (ASR A1.3) Motif number   SV09	General prohibitory signs (ASR A1.3) Motif number   SV31

Include the motif number with the item number for the appropriate material: **SV22.FAB99.100** (example for "Not drinking water - foil 100mm")

Material	Ø/mm	Item number	Piece	Material	Ø/mm	Item number	Piece	Material	Ø/mm	Item number	Piece	
Foil	75	____.FAB99.075	1	Plastic 1mm	75	____.PE00.075	1	Signs for the floor	Polycarbonate indoor	200	____.CA01.200	1
	100	____.FAB99.100	1		100	____.PE00.100	1			400	____.CA01.400	1
	200	____.FAB99.200	1		200	____.PE00.200	1		600	____.CA01.600	1	
	400	____.FAB99.400	1		400	____.PE00.400	1		400	____.PA01.400	1	
Aluminium composite 2mm	200	____.DA90.200	1	Hard foam 4mm	200	____.SA00.200	1	600	____.PA01.600	1		
	400	____.DA90.400	1		400	____.SA00.400	1	PVC outdoor	600	____.PA04.600	1	
	600	____.DA90.600	1		600	____.SA00.600	1	1000	____.PA04.100	1		

# Mandatory sign

Mandatory signs are used to indicate a certain behaviour and require, for example, the use of safety equipment. Make a valuable contribution to greater safety and accident prevention at the workplace. Our mandatory signs correspond to the currently valid DIN EN ISO 7010 and ASR A1.3.

## Material overview:

**Foils:** 0.1 mm thick | self-adhesive | for smooth and gap-free surfaces

**Aluminium composite:** 2.0 mm thick | for wall mounting indoors and outdoors | with self-adhesive or screw-in accessories

**Hard foam:** 4.0 mm thick | for wall mounting indoors | with self-adhesive or screw-in accessories

**Plastic:** 1.0 mm thick | for wall mounting indoors | with self-adhesive or screw-in accessories

**Polycarbonate:** 0.7 mm thick | self-adhesive | for various floors in industrial internal areas | sample: (11)

**Anti-slip:** 1.0 mm thick | self-adhesive | anti-slip surface | for various indoor floors | sample: (09)

**PVC outdoor:** 1.0 mm thick | self-adhesive | for outdoor floors as well as concrete paving and asphalt | sample: (09)

## Individual combination signs

Include the motif number with the item number for the appropriate material and your required text:

**SGK04.DA90.300**

**Text: Wear protective gloves**  
(example for SG04 "Use protective gloves" - aluminium composite 300 x 200mm)



Material	HxW / mm	Item number	Piece
Foil	150 x 100	_K__FAB99.150	1
	300 x 200	_K__FAB99.300	1
	450 x 300	_K__FAB99.450	1
Alu composite 2mm	300 x 200	_K__DA90.300	1
	450 x 300	_K__DA90.450	1
	600 x 400	_K__DA90.600	1
	750 x 500	_K__DA90.750	1

Material	HxW / mm	Item number	Piece
Plastic 1mm	150 x 100	_K__PE00.150	1
	300 x 200	_K__PE00.300	1
	450 x 300	_K__PE00.450	1
	300 x 200	_K__SA00.300	1
Hard foam 4mm	450 x 300	_K__SA00.450	1
	600 x 400	_K__SA00.600	1
	750 x 500	_K__SA00.750	1

## Accessories

### Screw set

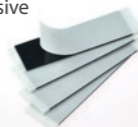
For wall mounting of signs, consisting of:  
Screws (4x35mm)  
Cover  
Dowels



Screw set	Item number
Set of 4	8008.00.105

### Adhesive pads

For the self-adhesive attachment signs to suitable surfaces.



Adhesive pads	Item number
Set of 4	8008.00.106
Set of 8	8008.00.107

General mandatory signs (ASR A1.3) Motif number   SG17	Use pedestrian walkway (ASR A1.3) Motif number   SG16	Use ear protection (ASR A1.3) Motif number   SG02	Wear gloves (ASR A1.3) Motif number   SG04	Wear safety footwear (ASR A1.3) Motif number   SG05
Wear a safety hat (ASR A1.3) Motif number   SG03	Use safety mask (ASR A1.3) Motif number   SG10	Wear high visibility vest (ASR A1.3) Motif number   SG06	Wear protective apron (ASR A1.3) Motif number   SG08	Wear protective clothing (ASR A1.3) Motif number   SG09
Wear life vest (ASR A1.3) Motif number   SG07	Use eye protection (ASR A1.3) Motif number   SG01	Use safety belt (ASR A1.3) Motif number   SG12	Unlock before maintenance or repair (ASR A1.3) Motif number   SG11	Read operating instructions (ASR A1.3) Motif number   SG36
Connect earth terminal (ASR A1.3) Motif number   SG24	Use handrail (ASR A1.3) Motif number   SG25	Wear dust mask (ASR A1.3) Motif number   SG26	Wear gas mask (ASR A1.3) Motif number   SG27	Use safety equipment (ASR A1.3) Motif number   SG23
Use bridge (ASR A1.3) Motif number   SG36	Use skin protection products (ASR A1.3) Motif number   SG13	Wash hands (ASR A1.3) Motif number   SG14	Use waste bins (tried in practice) Motif number   SG29	Disconnect mains plug (tried in practice) Motif number   SG37

Include the motif number with the item number for the appropriate material: **SG04.FAB99.100** (example for "Wear gloves" - foil 100mm)

Material	Ø/mm	Item number	Piece	Material	Ø/mm	Item number	Piece	Material	Ø/mm	Item number	Piece	
Foil	75	___FAB99.075	1	Plastic 1mm	75	___PE00.075	1	Signs for the floor	Polycarbonate indoor	200	___CA01.200	1
	100	___FAB99.100	1		100	___PE00.100	1			400	___CA01.400	1
	200	___FAB99.200	1		200	___PE00.200	1			600	___CA01.600	1
	400	___FAB99.400	1		400	___PE00.400	1			400	___PA01.400	1
Aluminium composite 2mm	200	___DA90.200	1	Hard foam 4mm	200	___SA00.200	1		600	___PA01.600	1	
	400	___DA90.400	1		400	___SA00.400	1		PVC outdoor	600	___PA04.600	1
	600	___DA90.600	1		600	___SA00.600	1		1000	___PA04.100	1	

# Warning signs

Warning signs indicate potential hazards and increase the attention and awareness of your employees. Protect your workplace from risks that cannot be avoided by technical or organisational measures. Our warning signs comply with the currently valid DIN EN ISO 7010 and ASR A1.3.

## Material overview:

**Foils:** 0.1 mm thick | self-adhesive | for smooth and gap-free surfaces

**Aluminium composite:** 2.0 mm thick | for wall mounting indoors and outdoors | with self-adhesive or screw-in accessories

**Hard foam:** 4.0 mm thick | for wall mounting indoors | with self-adhesive or screw-in accessories

**Plastic:** 1.0 mm thick | for wall mounting indoors | with self-adhesive or screw-in accessories

**Polycarbonate:** 0.7 mm thick | self-adhesive | for various floors in industrial internal areas | sample: (11)

**Anti-slip:** 1.0 mm thick | self-adhesive | anti-slip surface | for various indoor floors | sample: (09)

**PVC outdoor:** 1.0 mm thick | self-adhesive | for outdoor floors as well as concrete paving and asphalt | sample: (09)



## Individuelle Kombischilder

Include the motif number with the item number for the appropriate material and your required text:

**SWK14.DA90.300**  
**Text: Caution forklifts**  
 (example for SW14 "Caution forklifts" - aluminium composite 300x200mm)



Material	HxW / mm	Item number	Piece
Foil	150 x 100	_K__FAB99.150	1
	300 x 200	_K__FAB99.300	1
	450 x 300	_K__FAB99.450	1
Alu composite 2mm	300 x 200	_K__DA90.300	1
	450 x 300	_K__DA90.450	1
	600 x 400	_K__DA90.600	1
	750 x 500	_K__DA90.750	1

Material	HxW / mm	Item number	Piece
Plastic 1mm	150 x 100	_K__PE00.150	1
	300 x 200	_K__PE00.300	1
	450 x 300	_K__PE00.450	1
Hard foam 4mm	300 x 200	_K__SA00.300	1
	450 x 300	_K__SA00.450	1
	600 x 400	_K__SA00.600	1
	750 x 500	_K__SA00.750	1

## Accessories

### Screw set

For wall mounting of signs, consisting of:  
 Screws (4x35mm)  
 Cover  
 Dowels



Screw set	Item number
Set of 4	8008.00.105

### Adhesive pads

For the self-adhesive attachment signs to suitable surfaces.



Adhesive pads	Item number
Set of 4	8008.00.106
Set of 8	8008.00.107

Motif number   SW01	Motif number   SW14	Motif number   SW27	Motif number   SW12	Motif number   SW04
Motif number   SW16	Motif number   SW21	Motif number   SW02	Motif number   SW25	Motif number   SW17
Motif number   SW07	Motif number   SW08	Motif number   SW19	Motif number   SW20	Motif number   SW11
Motif number   SW24	Motif number   SW23	Motif number   SW22	Motif number   SW06	Motif number   SW03
Motif number   SW13	Motif number   SW18	Motif number   SW10	Motif number   SW15	Motif number   SW26

Include the motif number with the item number for the appropriate material: **SW14.FAB99.100** (example for "Caution forklift" - foil 100mm)

Material	SL/mm	Item number	Piece	Material	SL/mm	Item number	Piece
Foil	75	____.FAB99.075	1	Plastic 1mm	75	____.PE00.075	1
	100	____.FAB99.100	1		100	____.PE00.100	1
	200	____.FAB99.200	1		200	____.PE00.200	1
	400	____.FAB99.400	1		400	____.PE00.400	1
Aluminium composite 2mm	200	____.DA90.200	1	Hard foam 4mm	200	____.SA00.200	1
	400	____.DA90.400	1		400	____.SA00.400	1
	600	____.DA90.600	1		600	____.SA00.600	1

Signs for the floor

Material	SL/mm	Item number	Piece
Polycarbonate indoor	200	____.CA01.200	1
	400	____.CA01.400	1
	600	____.CA01.600	1
Anti-slip indoor	400	____.PA01.400	1
	600	____.PA01.600	1
PVC outdoor	600	____.PA04.600	1
	1000	____.PA04.100	1



**1A Tapes e.K.**  
Elsteraue 3  
D-07586 Bad Köstritz

Phone: +49 36605 99130  
Fax: +49 36605 991316  
web: [www.1atapes.com](http://www.1atapes.com)  
email: [info@1atapes.de](mailto:info@1atapes.de)

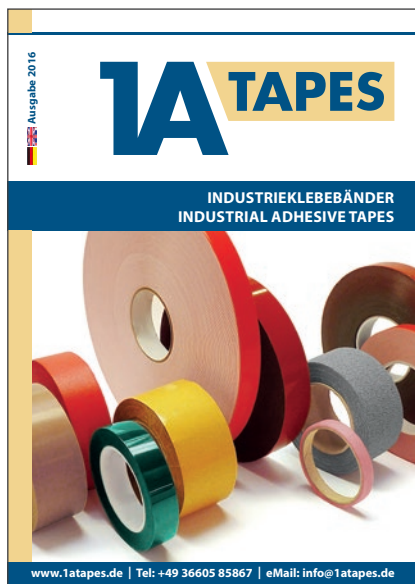
All information and recommendations are given by us to the best of our knowledge and based on practical experience.

However, we do not assume any guarantee for the correctness of the statements, in particular with regard to marketability and suitability for a specific purpose. Consequently, the user is responsible for deciding whether a product is suitable for a particular purpose and for the user's type of application. If you require assistance, our technical staff will be happy to provide you with advice and support. We assume no liability for improper processing and mechanical damage. Our terms and conditions apply.

*Misprints, errors and changes are reserved.*

Our complete product range can be found at  
**[www.1atapes.de](http://www.1atapes.de)**  
or in our other specialist catalogues:

### Industrial tapes



### Anti-slip products

